



Diesel Generator Set



PARTS LIST MANUAL

For

69UG15

Generator Set Units

Tier 4 - UG2001 to UG2050 Series



PARTS LIST MANUAL

For

69UG15

Generator Set Units

Tier 4 - UG2001 to UG2050 Series

TABLE OF CONTENTS

PARAGRAPH NUMBER	PAGE
INTRODUCTION	1
1.1 INTRODUCTION	1
1.2 MODEL AND PRODUCT IDENTIFICATION (PID) NUMBERS	1
1.3 ORDERING INSTRUCTIONS	1
1.4 GENERAL NOTES	1
1.5 PAINTED PARTS COLOR SYSTEM	2
2 UG GENSET CONFIGURATION	3
3 FRAME KIT	5
4 AIR FILTER - OIL BATH AIR CLEANER	6
5 AIR FILTER - DRY ELEMENT	7
6 AIR FILTER - DRY ELEMENT WITH PRE-CLEANER	8
7 UNIDRIVE ASSEMBLY	9
8 BATTERY KIT	13
9 MOUNTING KIT	15
10 EXHAUST SYSTEM	17
11 BATTERY CHARGER (PIDS PRIOR TO UG2019)	18
12 BATTERY CHARGER (PIDS UG2019 AND UP)	19
13 SKINS KIT	20
14 DECAL KIT	23
15 SNUBBER KIT	24
16 CONTROL BOX	25
17 ELECTRICAL BOX	33
18 RECEPTACLE BOX	35
19 WIRE HARNESS	39
20 VOLTAGE KIT	41
21 COOLANT SYSTEM	43
22 FUEL SYSTEM KIT	45
23 FUEL TANK	47
INDEX	54

SECTION 1

INTRODUCTION

1.1 INTRODUCTION

This parts list identifies service replacement parts for the Carrier Transicold Diesel-Driven Generator Set listed in the model chart below. This parts list does not include detailed replacement parts for the engine listed in the first chart below. Detailed parts identification for these items may be found in the applicable parts list. The form numbers for the engine omit revision dash numbers. For example, the latest engine list may have an -01 added to the basic number to read 62-03459-01. Therefore, when forms are ordered the latest revision will be sent.

MANUAL / FORM NUMBER	ENGINE PART NUMBER	EQUIPMENT COVERED	TYPE OF MANUAL / FORM
62-11362 *	26-00136-04SV	V2203-DI	Workshop
62-11335 *		V2203-DI	Engine Parts List

* When referring to the engine manual, please note that this engine has been assembled using a two piece oil pan.

1.2 MODEL AND PRODUCT IDENTIFICATION (PID) NUMBERS

Beginning with early 1995 production, Carrier Transicold began using a parts identification (PID) number in the format of UG0000 in addition to a model number. In this manual, the PID number is shown in boldface to point out variations within models.

1.3 ORDERING INSTRUCTIONS

All orders and inquiries for parts must include:

- Part Identification Number (PID)
- Model Number
- Unit Serial Number
- Part Number
- Description of Part as shown on list
- Quantity required

Address all correspondence for parts to the following address:

For orders, go to www.transcentral.carrier.com

For inquiries, email: carrieraftermarketparts@carrier.utc.com

1.4 GENERAL NOTES

To find replacement parts, consult table of contents, and turn to the appropriate page for the illustrated breakdown of replacement parts. The following letter designations are used to classify parts throughout this list:

A/R *As Required*

NLO *No Longer Offered*

PID *Parts Identification Number* - essential to identify unit configuration

PL *Purchase locally*

SST *Stainless Steel* - 300 Series unless otherwise specified

SV *Suffix SV* - added to the part number designates service part replacement part

1.5 PAINTED PARTS COLOR SYSTEM

Available paint colors: (Other than Standard Carrier Transicold White or Hull Blue)

PAINT COLOR	PART NO.
Sky Blue	36-00048-28
Flame Orange	36-00048-27
Citrus Orange	36-00048-29
Raven Black	36-00048-04
Red	36-00048-57

Overview of the new numbering system:

A typical part number appears as: 79-01741-00 (access door). To order an access door in sky blue, add the last three digits of the special color paint and then add the specific dash number for the color of that paint.

For example:

Sky blue paint P/N is 36-00048-28.

The last three digits of the blue paint are: 048

The specific dash number is: 28

The painted parts system looks like this:

79-01741-00 Standard P/N for the access door.

048 Last 3 digits of special color paint.

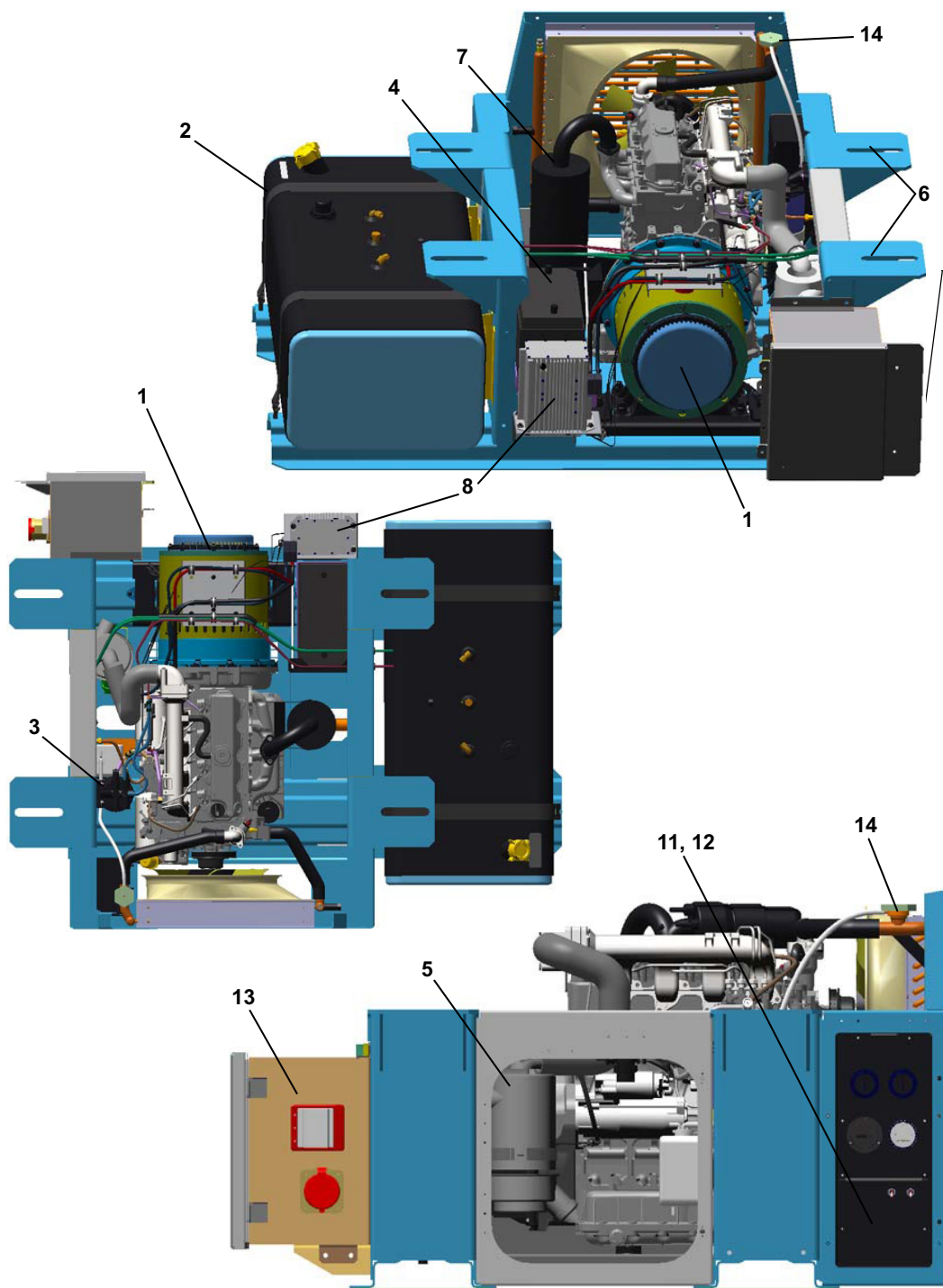
28 Specific dash # for color of paint.

79-01741-0004828 P/N For Special Painted Door

Data Entry Note:

The above is an example of how most parts should be ordered. Certain customers may have character constraints that will only allow them to input 14 characters into their system; our new painted part numbers are 16 characters long. Therefore, they should order these parts without the dashes. The entries will look like the following:
79017410004828

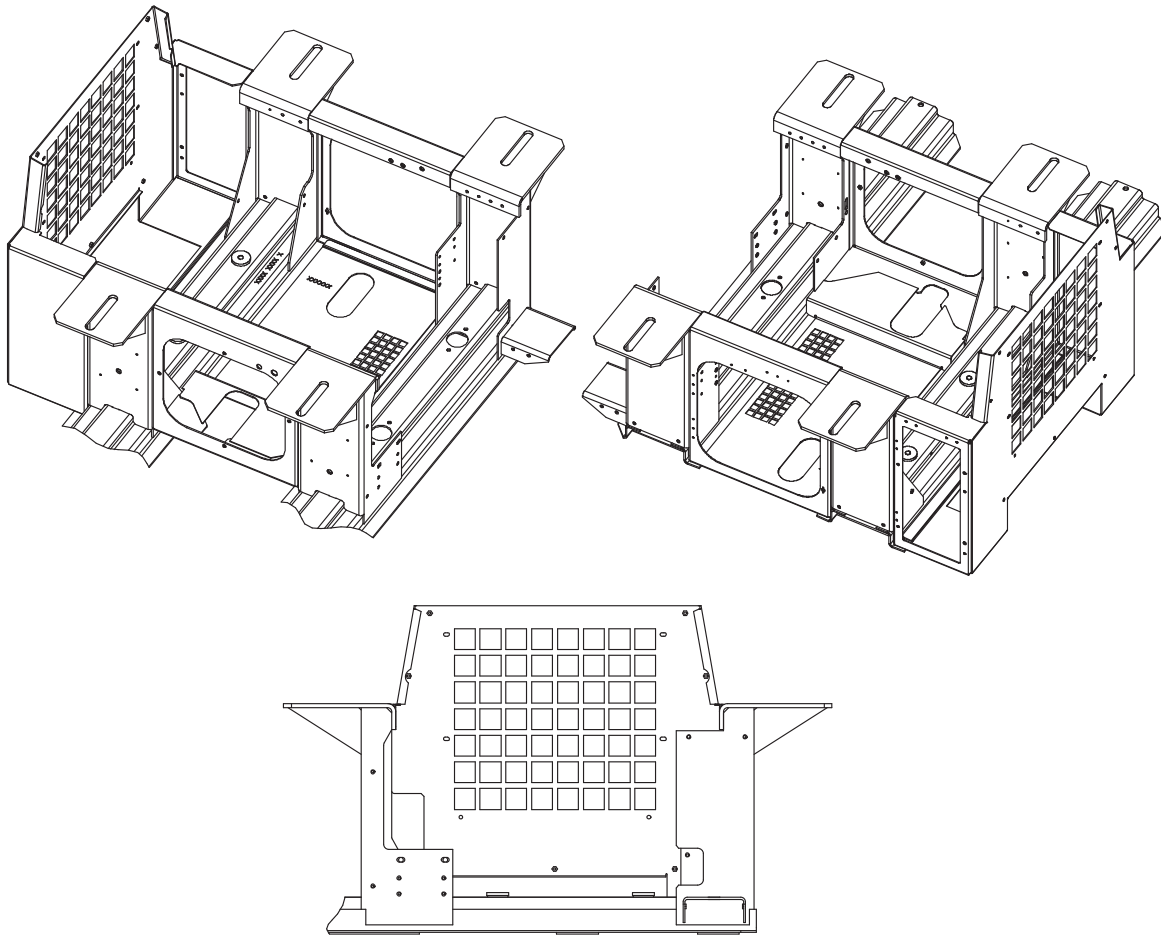
2 UG GENSET CONFIGURATION



2 UG GENSET CONFIGURATION

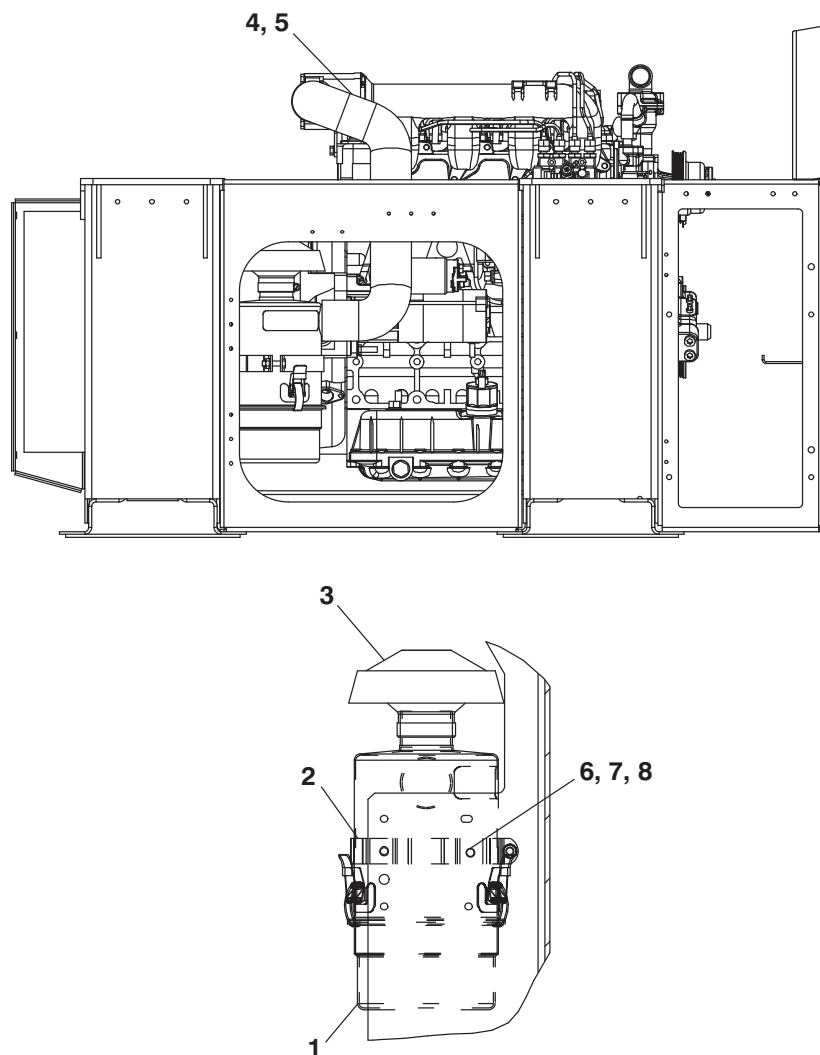
Item	Section Number	Area Description	
1	Refer to Section 7	Unidrive Assembly	
2	Refer to Section 23	Fuel Tank	
3	Refer to Section 22	Fuel System	
4	Refer to Section 8	Battery Kit	
5	Refer to Section 4	Air Filter	
6	Refer to Section 9	Mounting Kit	
7	Refer to Section 10	Exhaust System	
8	Refer to Section 11	Battery Charger Kit	
9	Refer to Section 13	Skins Kit (Not Shown)	
10	Refer to Section 14	Decal Kit (Not Shown)	
11	Refer to Section 20	Voltage Kit	
12	Refer to Section 16	Control Box	
13	Refer to Section 18	Receptacle Box	
14	Refer to Section 21	Coolant System	
15	Refer to Section 15	Snubber Kit (Not Shown)	
16	Refer to Section 19	Wire Harness (Not Shown)	

3 FRAME KIT



Item	Part Number	Description	Qty
	86-04831-01	50/65 Gallon Tank C.E.	1
	86-04831-03	80 Gallon Tank C.E.	1
	86-04831-05	50/65 Gallon Tank / Interlock Recept	1
	86-04831-06	50/65 Gallon Tank / T.I.R	1
			86-04831

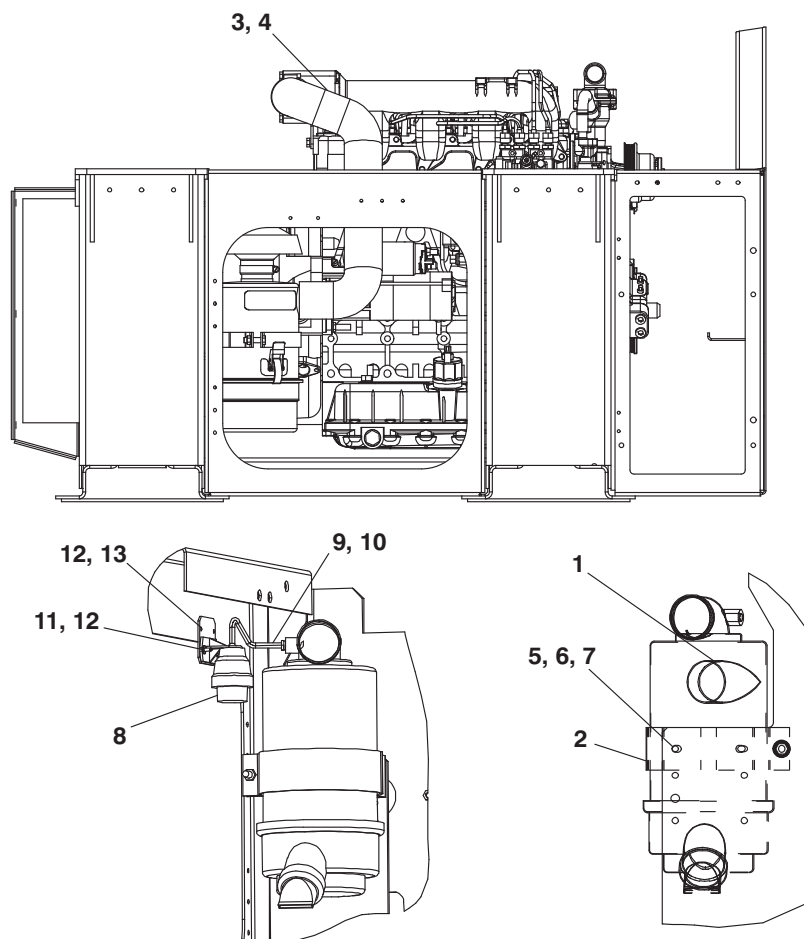
4 AIR FILTER - OIL BATH AIR CLEANER



Item	Part Number	Description	Qty
Oil Bath Air Cleaner			
1	30-00473-04	Air Cleaner	1
	30-00473-20	Gasket, Oil Bath	1
2	44-00447-00	Bracket Air Cleaner	1
3	30-00356-00	Hood	1
4	58-04780-01	Hose	1
5	KA-69JM-840	Clamp, Hose	2
6	66-U-1-5321-3	Washer, Plain 1/4 N Type A	2
7	66-U-1-5371-8	Screw, Machine Hex Head 1/4-20 X 1.00	2
8	34-00667-11	Nut, Self Lock	2

77-01308-00

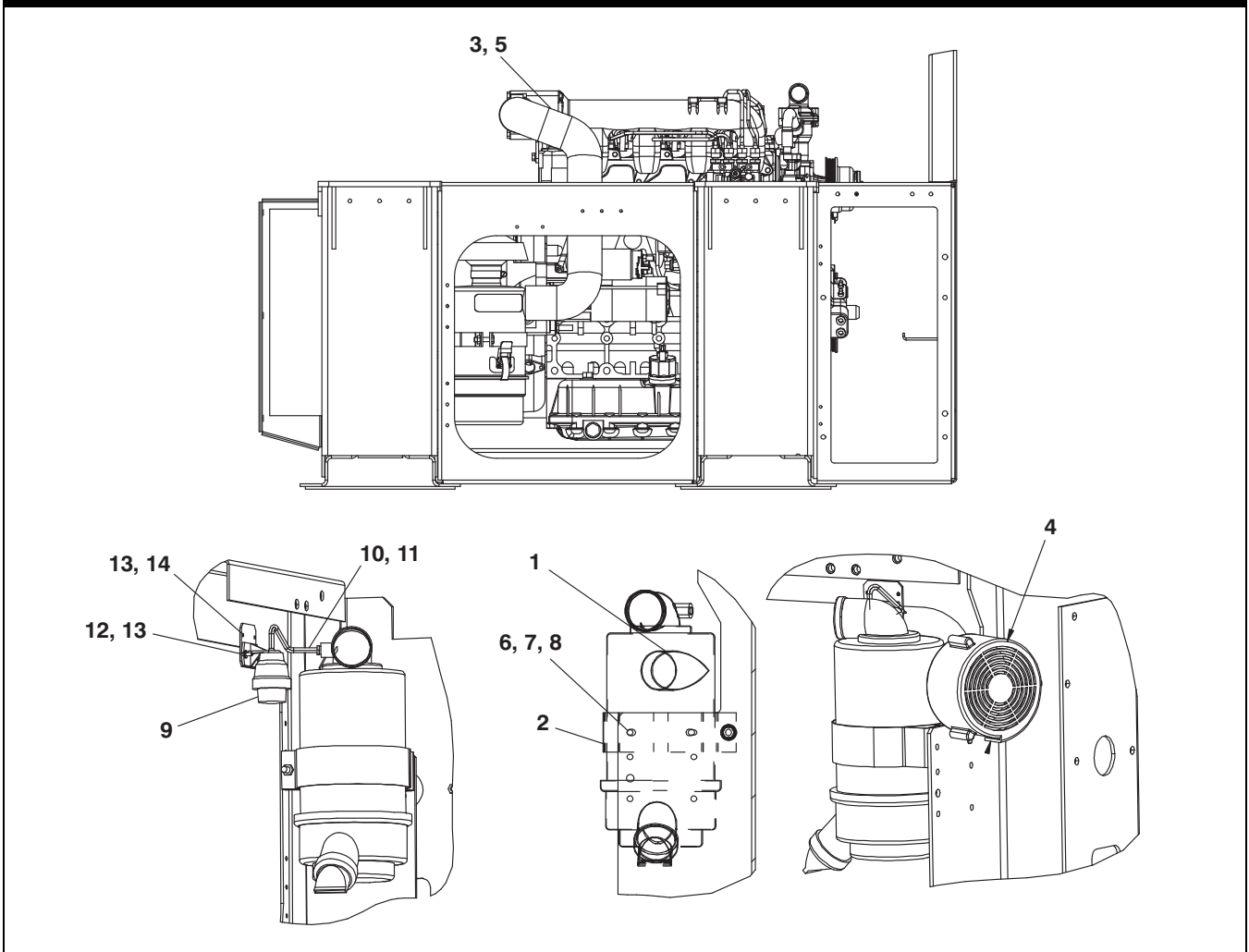
5 AIR FILTER - DRY ELEMENT



Item	Part Number	Description	Qty
Dry Element Air Filter			
1	30-00426-05	Air Cleaner	1
	30-00426-25	Filter Dry Element	1
	30-00426-24	Filter Dry Element - High Soot	1
2	44-00454-00	Bracket	1
3	58-04780-00	Hose	1
4	KA69JM840	Clamp, Hose	2
5	66U-1-5321-3	Washer, Plain 1/4 N Type A	2
6	66U-1-5361-25	Screw, Cap Hex Head 1/4-20 X 0.75	2
7	34-00667-11	Nut, Self Lock	2
8	30-00406-01	Indicator Air Filter	1
9	40-00506-00	Fitting 1/8" Npt	1
10	58-04102-03	Hose	1
11	66U-1-9132	Washer, Plain	2
12	34-00928-10	Rivet, Blind	4
13	68-15491-00	Plate	1

77-01308-01

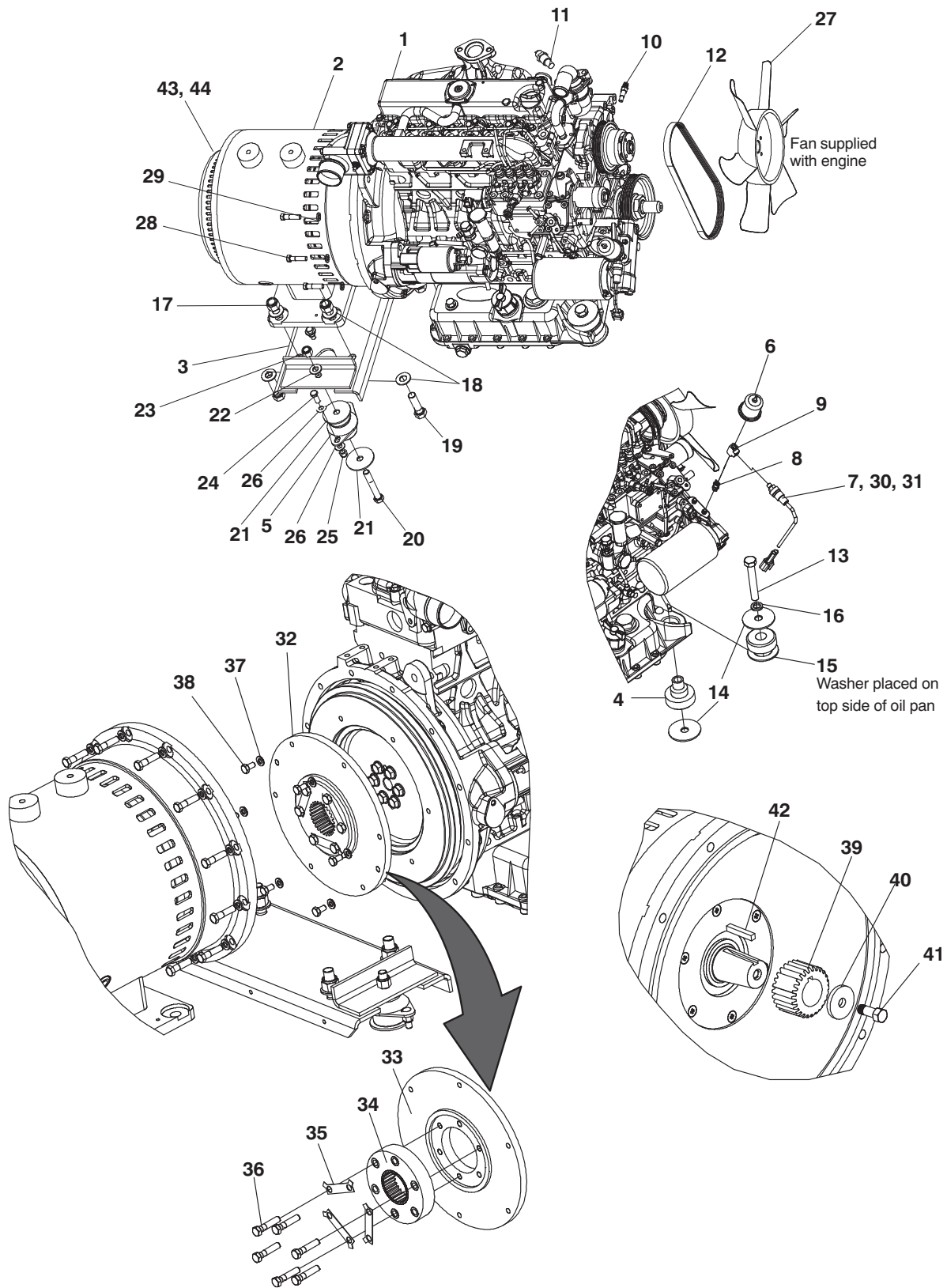
6 AIR FILTER - DRY ELEMENT WITH PRE-CLEANER



Item	Part Number	Description	Qty
Dry Element Air Filter with Pre-Cleaner			
1	30-00426-05	Air Cleaner	1
	30-00426-25	Filter Dry Element	1
	30-00426-24	Filter Dry Element - High Soot	1
2	44-00454-00	Bracket	1
3	58-04780-00	Hose	1
4	30-00446-00	Pre-Cleaner Air Filter	1
5	KA69JM840	Clamp, Hose	2
6	66U-1-5321-3	Washer, Plain 1/4	2
7	66U-1-5361-25	Screw, Cap Hex Head 1/4-20 X 0.75	2
8	34-00667-11	Nut, Self Lock	2
9	30-00406-01	Indicator Air Filter	1
10	40-00506-00	Fitting 1/8" Npt	1
11	58-04102-03	Hose	1
12	66U-1-9132	Washer, Plain	2
13	34-00928-10	Rivet, Blind	4
14	68-15491-00	Plate	1

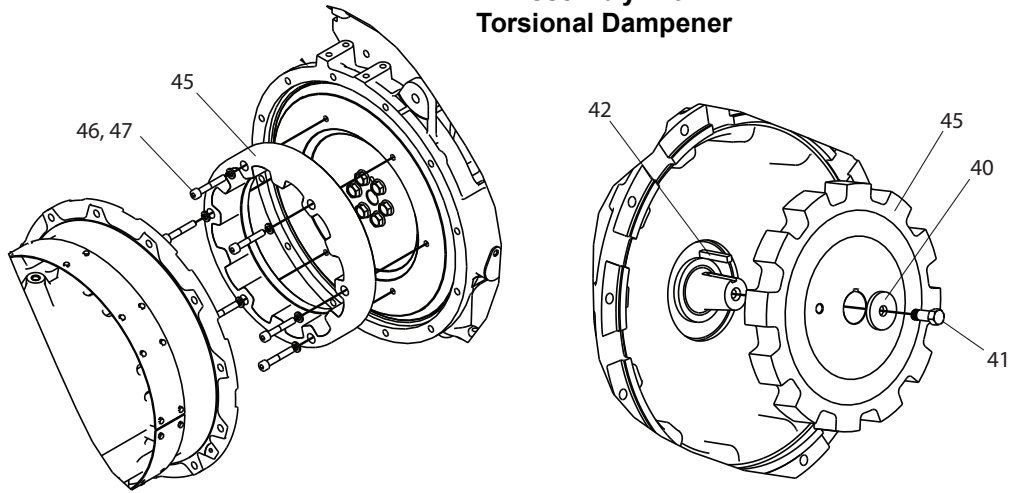
77-01308-02

7 UNIDRIVE ASSEMBLY



7 UNIDRIVE ASSEMBLY

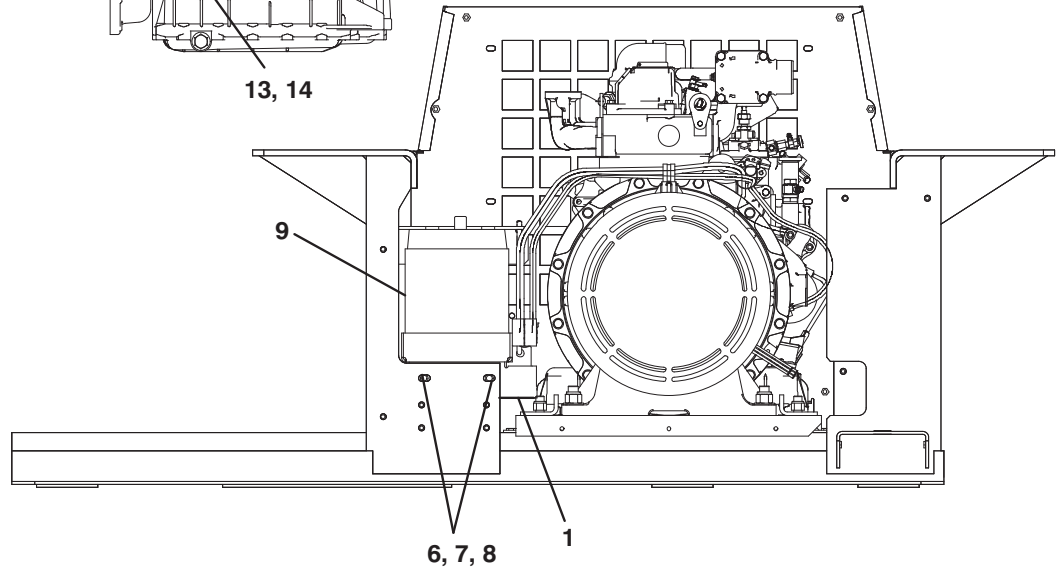
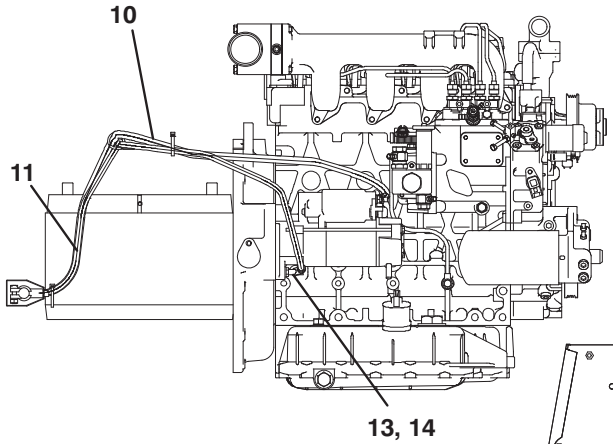
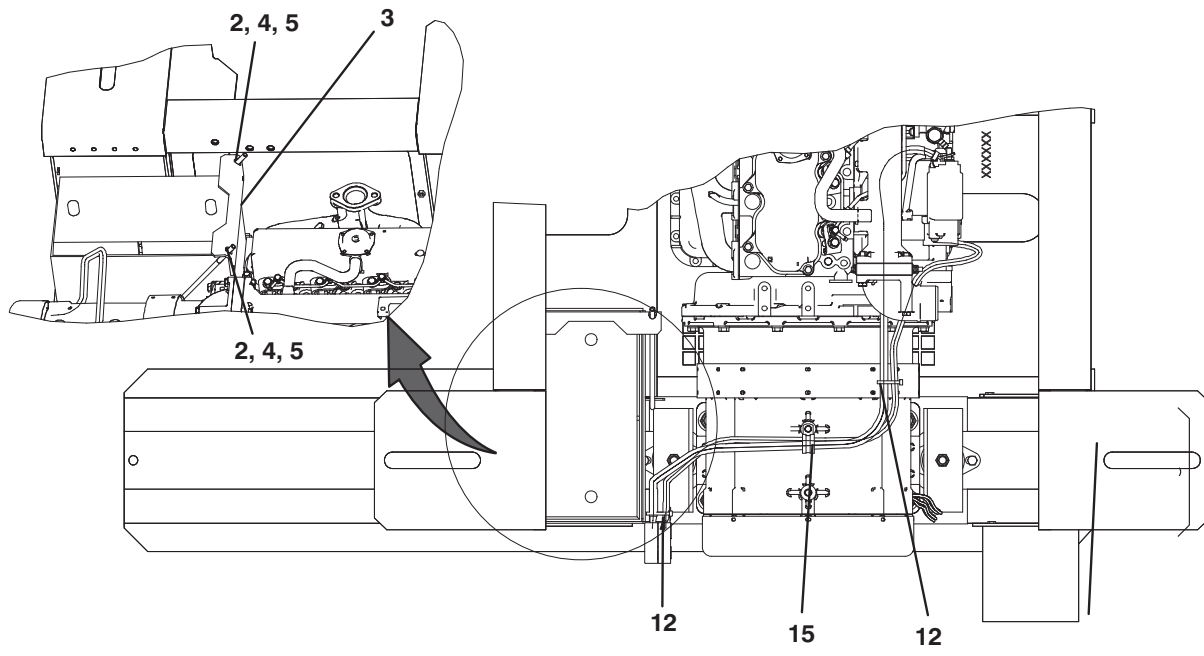
Assembly with
Torsional Dampener



Item	Part Number	Description	Qty
1	26-00136-04SV	Engine	1
2	54-00669-20	Generator	1
3	86-04524-01	Plate, Support	1
4	73-00198-01	Shockmount	2
5	73-00175-01	Shockmount	2
6	66U1-2823-3	Sender, Oil Pressure	1
7	12-00592-02	Switch, Pressure Oil	1
8	40-00067-01	Nipple, Hex 1/8 X 1/8 Npt	1
9	40-00107-01	Tee 1/8 Npt	1
10	12-00098-04	Sending Unit, Water Temperature	1
11	10-00158-02	Switch, Safety 1/2" Npt Water Temperature	1
12	50-60330-03	V-Belt, Poly	1
13	66U1-5361-36	Screw, Cap Hex Head 5/8-11 X 4.00	2
14	34-06060-01	Washer, Snubbing	4
15	34-00890-10	Washer, Flat	2
16	66U1-5331-8	Washer, Lock 5/8 Spring	2
17	34-00795-17	Nut, Self Lock	4
18	66U1-5321-9	Washer, Plain 5/8	8
19	34-00804-18	Screw, Cap Hex Head 5/8-18 X 2.25	4
20	34-00833-28	Screw, Cap Hex Head 1/2-13 X 3.50	2
21	34-06060-02	Washer, Snubbing	4
22	34-00829-15	Washer, Plain	2
23	34-00667-15	Nut, Self Lock	2
24	34-00807-08	Screw, Cap Hex Head 3/8-16 X 1.00	4
25	34-00667-13	Nut, Self	4
26	34-00829-13	Washer, Plain 3/8	8
27	38-00252-00	Fan	4
28	34-00807-12	Screw, Cap Hex Head 3/8-16 X 1.50	12
29	34-00663-13	Washer, Lock 3/8 Spring	12
30	58-00858-00	Tube, Slit 1/4 ID Bulk 25 feet	1

7 UNIDRIVE ASSEMBLY			
31	58-00079-02	Sta-Strap	2
32	79-04009-00	Adapter Plate Assembly:	1
33	48-00459-00	Adapter Flywheel	1
34	50-00230-00	Gear	1
35	68-12650-00	Bar	3
36	34-00304-14	Screw, Cap Hex Head 3 / 8-16 X 1.75	6
37	34-01151-08	Washer, Flat M8	6
38	34-01153-25	Screw, Cap Hex Head M8 X 25MM	6
39	48-01049-00	Gear Driven	1
40	34-01319-00	Washer, Flat 3/8 Hardened	1
41	34-00559-08	Screw, Cap Hex Head 3/8-24 X 1.00	1
42	34-06029-08	Key, Square 1/4 Sq X 1.12 Lg	1
43	54-00669-21	Fan	1
44	54-00669-22	Fan Cover	1
Units with Torsional Dampener			
45	50-01195-00	Coupling (Torsional Dampener)	1
46	34-01369-50	Screw, Socket HD	6
47	34-01146-58	Washer, Lock	6
			77-01566-00

8 BATTERY KIT

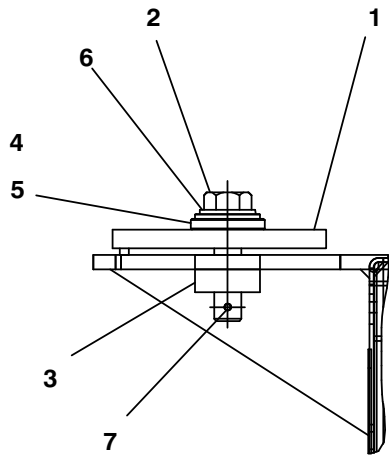


8 BATTERY KIT

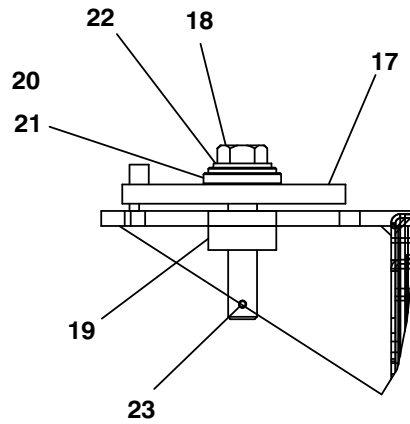
Item	Part Number	Description	Qty
1	86-05031-00	Box Assembly, Weld 69UG Battery	1
2	34-06247-06	J-Hook	2
3	68-17382-00	Angle, Hold Down	1
4	34-00667-12	Nut, Self Lock	2
5	34-00662-12	Washer, Plain	2
6	34-00807-08	Screw, Cap Hex Head 3/8-16 X 1.00	4
7	34-00663-13	Washer, Lock 3/8 Spring	4
8	34-06212-14	Washer, Plain 3/8 N Type A	4
9	30-50349-00	Battery 12V	1
10	22-01633-88	Cable, Battery Positive Red	1
11	22-01633-89	Cable, Battery Negative Black	1
12	58-00079-02	Sta-Strap	7
13	34-00372-43	Washer, Lock	1
14	34-06134-07	Nut, Hex	1
15	44-00102-57	Clamp, Cushioned	1

77-01569-00

Standard Mounts



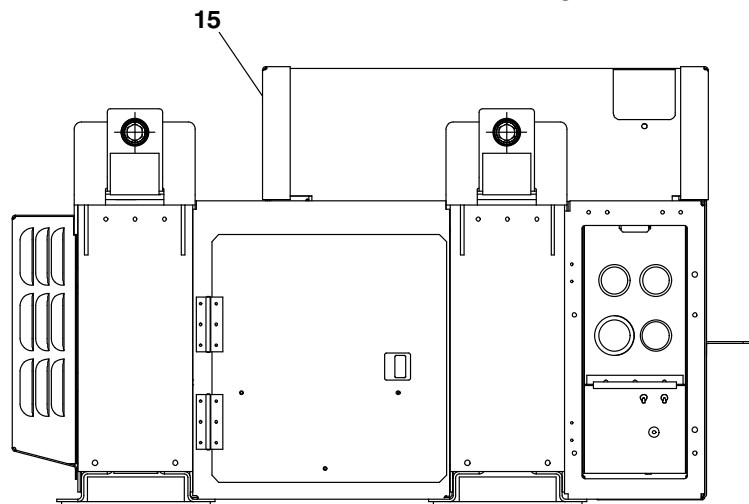
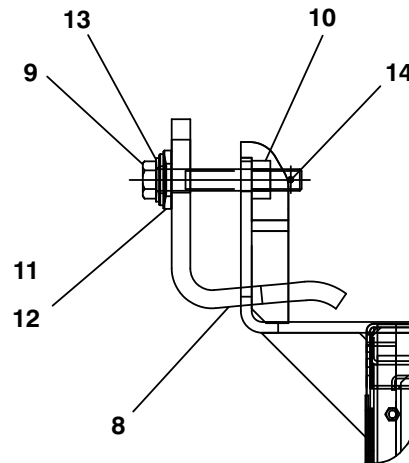
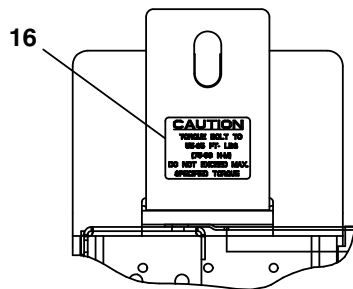
77-00616-02 and 08
1/4" — 1/2" Thickness



77-00616-07
1/4" — 3/4" Thickness

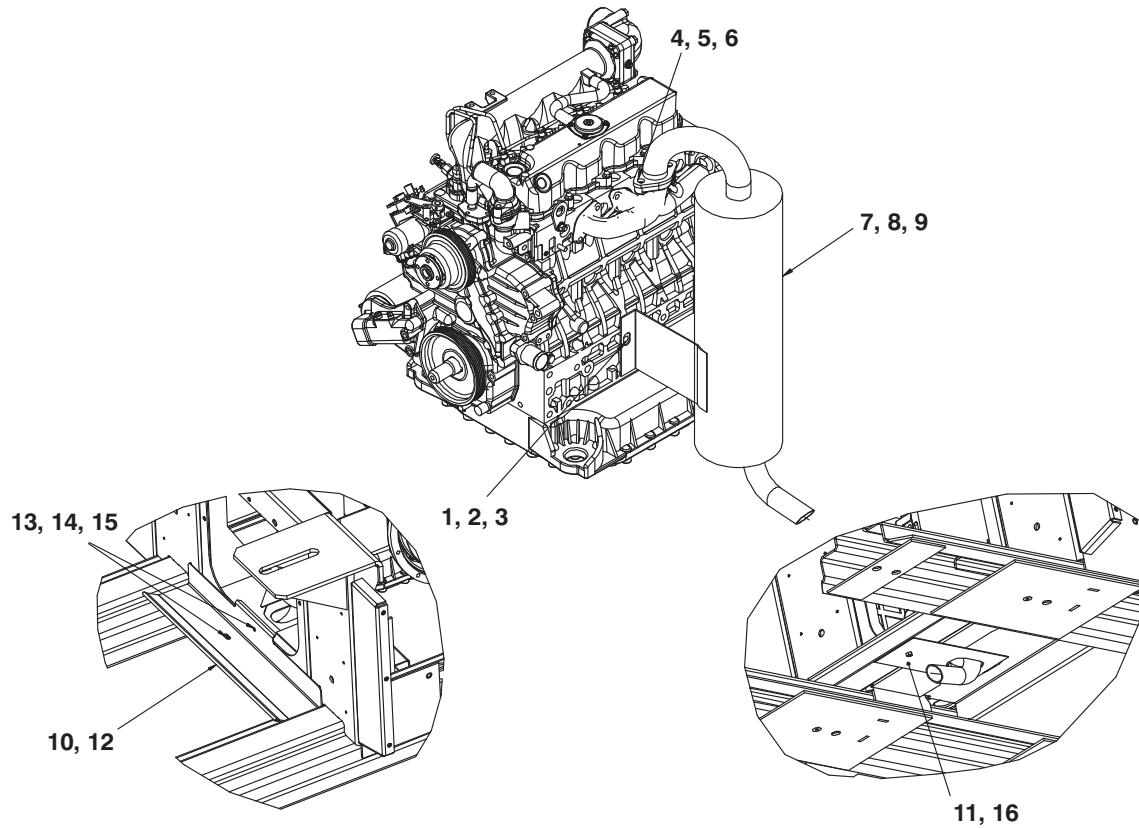
Quick Mount

77-00616-05



9 MOUNTING KIT			
Item	Part Number	Description	Qty
Option 1 - Standard Mount 1/4" - 1/2"			
1	30-00473-04	Plate, Mounting	4
2	34-06151-01	Bolt, Hex Head 3/4-10 X 3.0	4
3	34-06157-00	Nut, Tee	4
4	34-06158-00	Washer	4
5	34-06158-21	Washer	4
6	34-06159-50	Washer	4
7	34-06026-02	Rollpin	4
Option 2 - Quick Mount			
8	68-13440-01	Plate, Mounting	4
9	34-06151-00	Bolt, Hex Head 3/4-10 X 5.0	4
10	34-00363-18	Nut, Tee	4
11	34-06158-00	Washer	4
12	34-06158-21	Washer	4
13	34-06159-50	Washer	4
14	34-06026-02	Rollpin	4
15	68-12069-02	Plate	2
16	62-10396-00	Label Torque Bolt	4
Option 3 - Standard Mount 1/2" - 3/4"			
17	68-11862-03	Plate, Mounting	4
18	34-06151-02	Bolt, Hex Head 3/4-10 X 4.0	4
19	34-06157-00	Nut, Tee	4
20	34-06158-00	Washer	4
21	34-06158-21	Washer	4
22	34-06159-50	Washer	4
23	34-06026-02	Rollpin	4
Option 4 - Standard Mount with Zinc Plated Hardware 1/4" - 1/2"			
1	68-11862-01	Plate, Mounting	4
2	34-06151-01	Bolt, Hex Head 3/4-10 X 3.0	4
3	34-06157-01	Nut, Tee	4
4	34-06158-02	Washer	4
5	34-06158-22	Washer	4
6	34-06159-50	Washer	4
7	34-06026-02	Rollpin	4
			77-00616

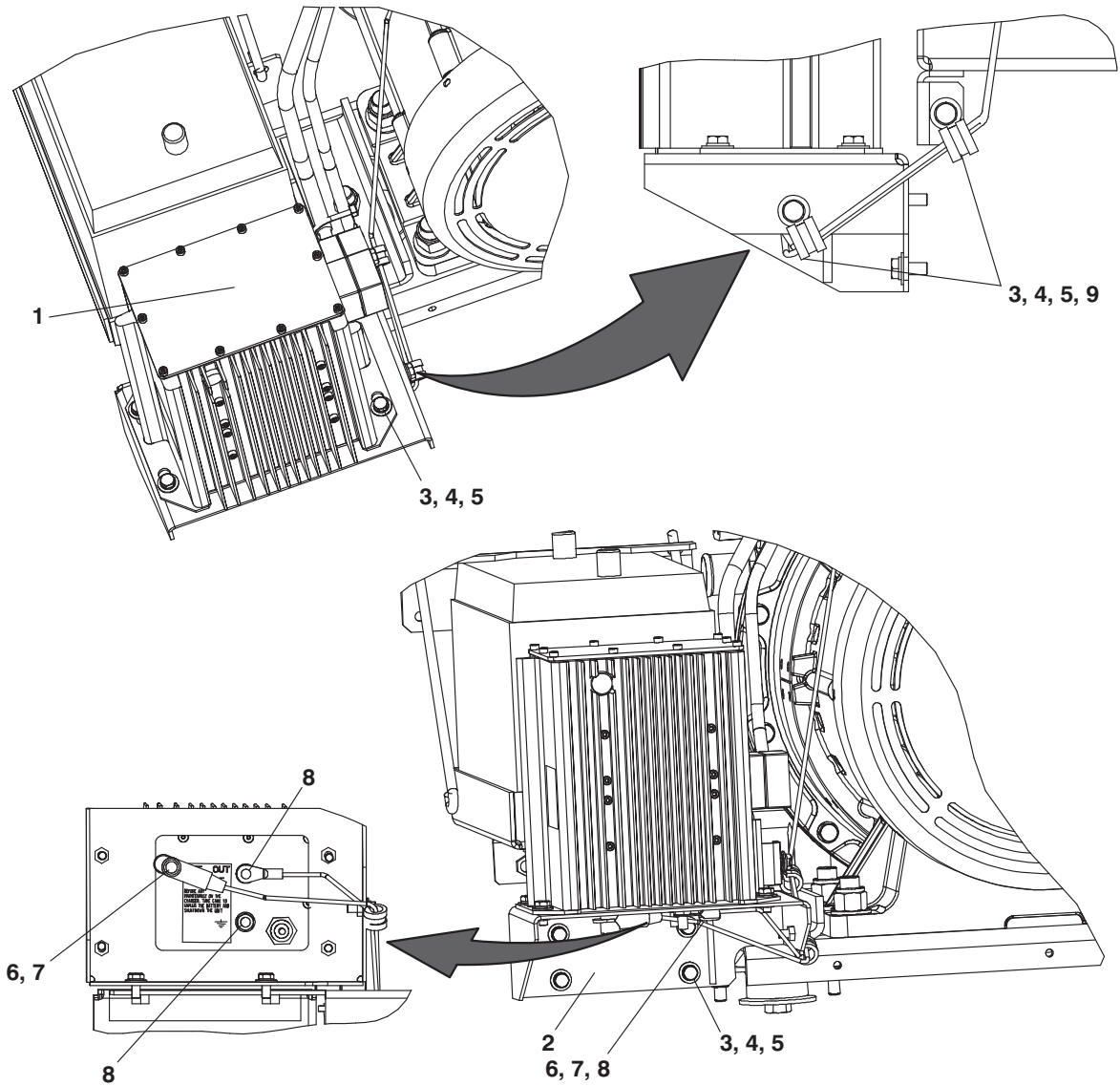
10 EXHAUST SYSTEM



Item	Part Number	Description	Qty
Common Parts			
1	34-01146-12	Washer, Lock	2
2	34-01151-12	Washer, Flat	2
3	34-01155-25	Screw, Cap Hex Head	2
4	34-00964-00	Stud	2
5	34-00932-13	Nut, Jam 3/8-24	4
6	66U1-5321-5	Washer, Plain 3/8	2
Option 1 - Common Muffler			
7	30-00472-00	Muffler	1
Option 2 - Aluminized Muffler			
8	30-00472-01	Muffler Aluminized	1
Option 3 - Muffler with Baffle			
9	30-00472-00	Muffler	1
10	68-15037-00	Baffle	1
11	68-15038-00	Baffle, Exhaust	1
12	66CH1-1172-102	Trim, Flexible	1
13	66U1-5361-25	Screw, Cap Hex Head 1/4-20 X .75	2
14	AU11JR171	Washer, Lock 1/4 Spring	2
15	66U1-5321-3	Washer, Plain 1/4	2
16	42-00174-51	Gasket	1

77-01309-00

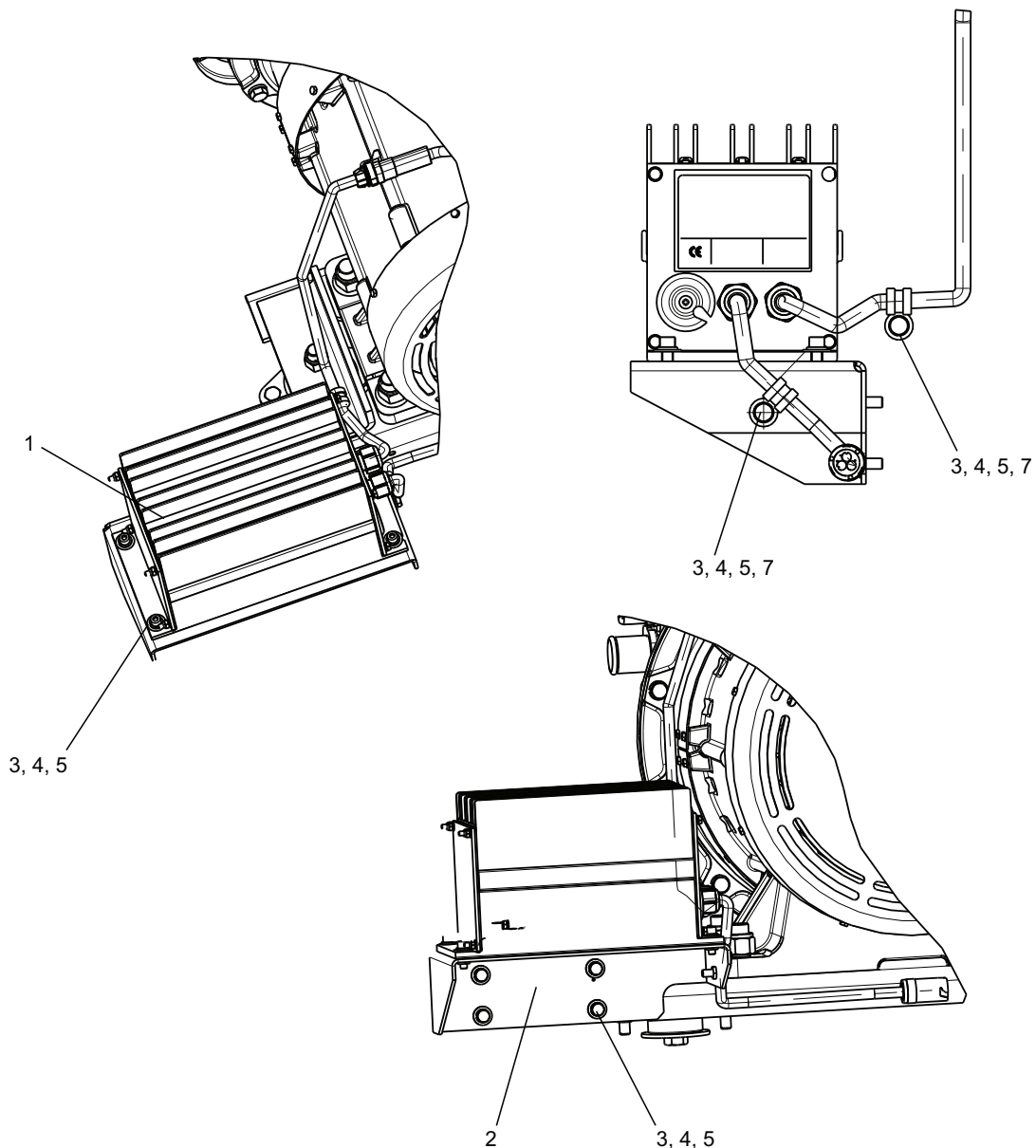
11 BATTERY CHARGER (PIDS PRIOR TO UG2019)



Item	Part Number	Description	Qty
1	12-00683-03	Battery Charger	1
2	86-04928-00	Bracket	1
3	34-00655-06	Screw, Cap Hex Head 1/4-20 X 0.75	10
4	34-00662-11	Washer, Plain 1/4	10
5	34-00663-11	Washer, Lock 1/4 Spring	10
6	22-04277-00	Harness	1
7	34-01184-106	Nut, Lock M6	1
8	34-01184-108	Nut, Lock M8	2
9	34-00373-05	Clamp, Tube	2

77-01572-00

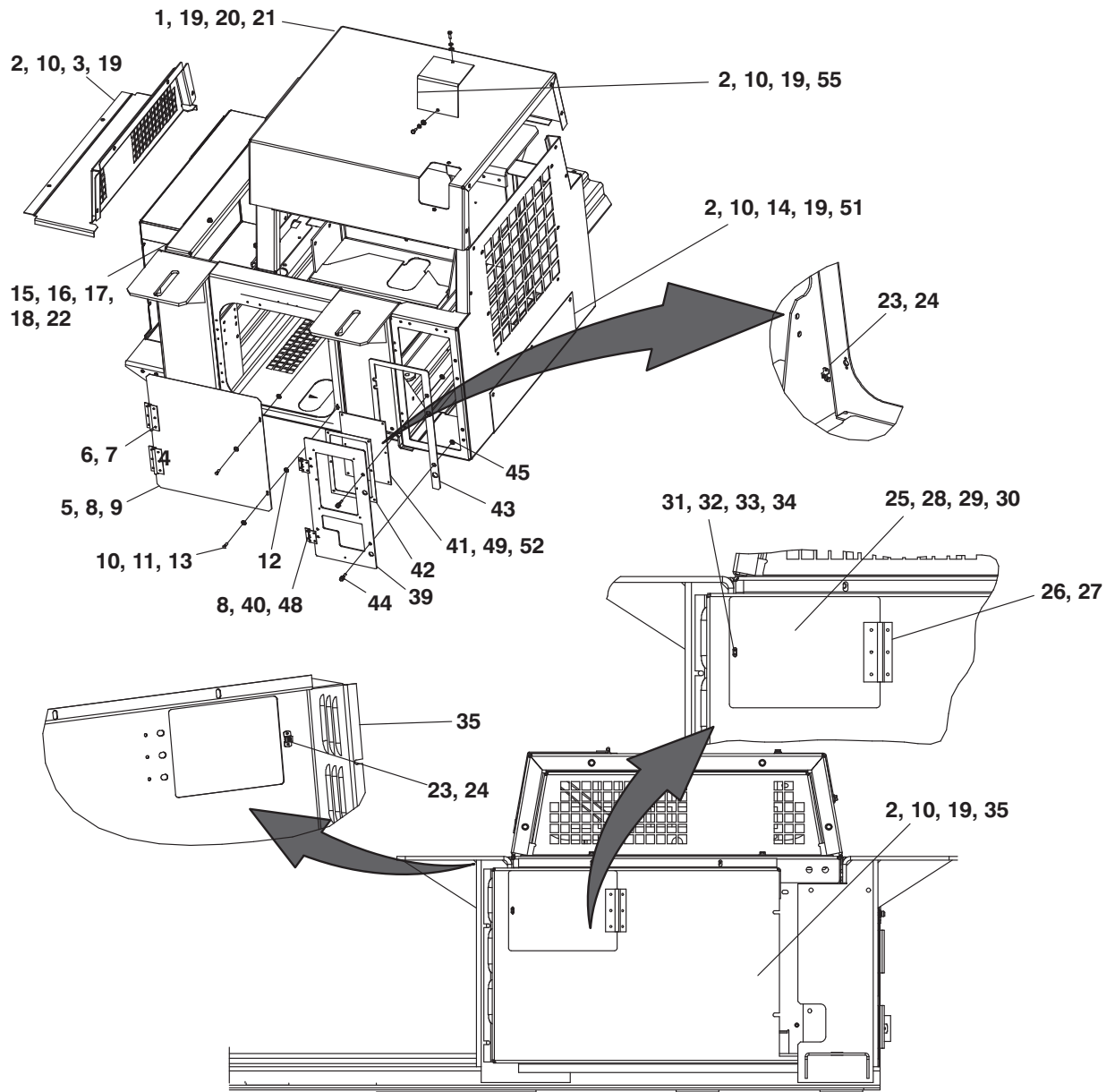
12 BATTERY CHARGER (PIDS UG2019 AND UP)



Item	Part Number	Description	Qty
1	30-00460-06	Battery Charger	1
2	84-04928-01	Bracket	1
3	34-00655-06	Screw, Cap Hex Head	6
4	34-00662-11	Washer, Plain 1/4	10
5	34-00663-11	Washer, Lock 1/4 Spring	10
6	34-06014-12	Screw, Cap Socket Head	4
7	44-00102-68	Clamp, Cushioned	2

77-00361-00

13 SKINS KIT



Item	Part Number	Description	Qty
		Cover Assembly Includes:	
1	68-14535-00	Cover	1
2	34-00655-06	Screw, Cap Hex Head 1/4-20 X 0.75	11
3	68-15522-01	Panel, Top	1
4	76-00663-17	Access Door Assembly Includes:	1
5	68-16964-00	Door, Access	1
6	44-00352-01	Hinge	2
7	34-00928-14	Rivet, Blind	6
8	34-00928-13	Rivet, Blind	6

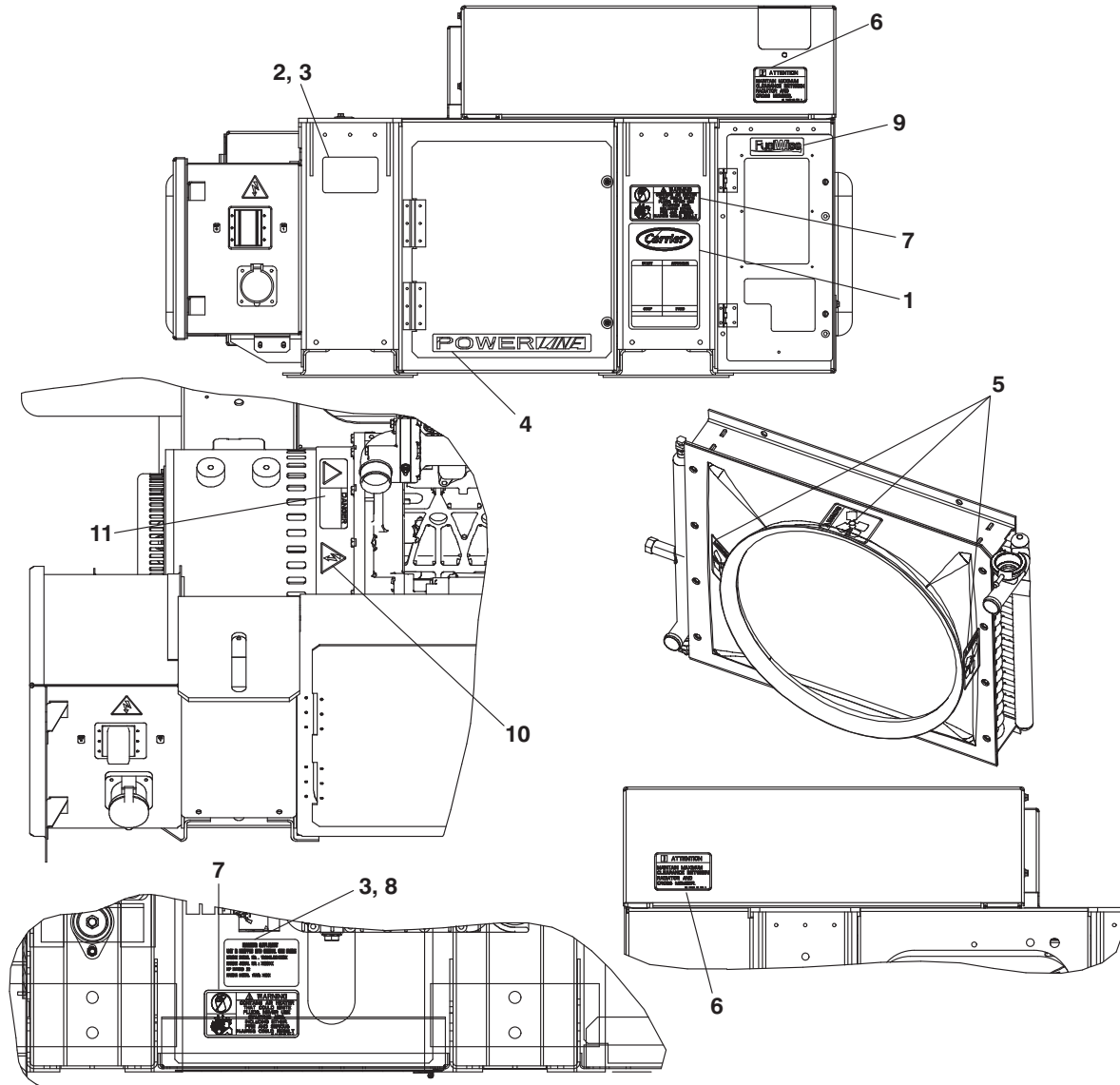
13 SKINS KIT

9	66U1-2552-173	Gasket	2
10	34-00662-11	Washer, Plain 1/4	2
11	66U1-6811-12	Screw, Retaining	2
12	34-06053-03	Washer	2
13	34-01226-00	Washer, Retaining	2
14	68-17019-01	Door	1
15	86-04906-00	Channel, Support Frame	1
16	34-00807-10	Screw, Cap Hex Head 3/8-16 X 1.25	4
17	66U1-5321-17	Washer, Plain 3/8 W Type A	4
18	34-00663-13	Washer, Lock 3/8 Spring	4
19	AU11JR171	Washer, Lock 1/4 Spring	19
20	34-06003-08	Screw, Cap Hex Head 1/4-20 X 1.00	8
21	66U1-5321-7	Washer, Plain 1/4	8
22	68-14709-00	Spacer	2
23	34-01142-01	Receptacle	3
24	34-00928-02	Rivet, Blind	6
25	76-00663-18	Access Door Assembly Includes:	1
26	44-00352-01	Hinge	1
27	34-00928-13	Rivet, Blind	6
28	68-12814-02	Door, Access	1
29	42-00174-42	Gasket	2
30	42-00174-43	Gasket	2
31	34-00662-11	Washer, Plain 1/4	1
32	66U-1-6811-12	Screw, Retaining	1
33	34-01226-00	Washer, Retaining	1
34	34-06053-03	Washer	1
35	68-16776-01	Panel, Back	1
36	42-00174-42	Gasket	2
37	42-00174-43	Gasket	2
38	79-01795-01	Door Assembly Includes:	1
39	68-13439-02	Door	1
40	44-00399-01	Hinge	2
41	58-04428-00	Panel	1
42	42-00483-00	Gasket	1
43	42-00484-00	Gasket	1
44	66U1-6811-8	Screw, Retaining	1
45	34-06169-00	Washer, Retaining	2
46	62-03957-04	Decal, Warning High Voltage	1
47	34-00928-13	Rivet, Blind	4
48	66U1-5371-9	Screw, Mach Hex Head #10-24 X 3/8Lg Sltd	4
49	34-00928-05	Rivet, Blind	6
50	AU53VA061	Washer, Gasket	6
51	66UI-2552	Gasket	1

13 SKINS KIT

52	AU53VA061	Washer, Gasket	4
53	66U1-5371-9	Screw, Mach Hex Head #10-24 X 3/8Lg Sltd	6
54	34-00928-05	Rivet, Blind	6
55	68-14252-00	Access Panel	1
			77-01573-00

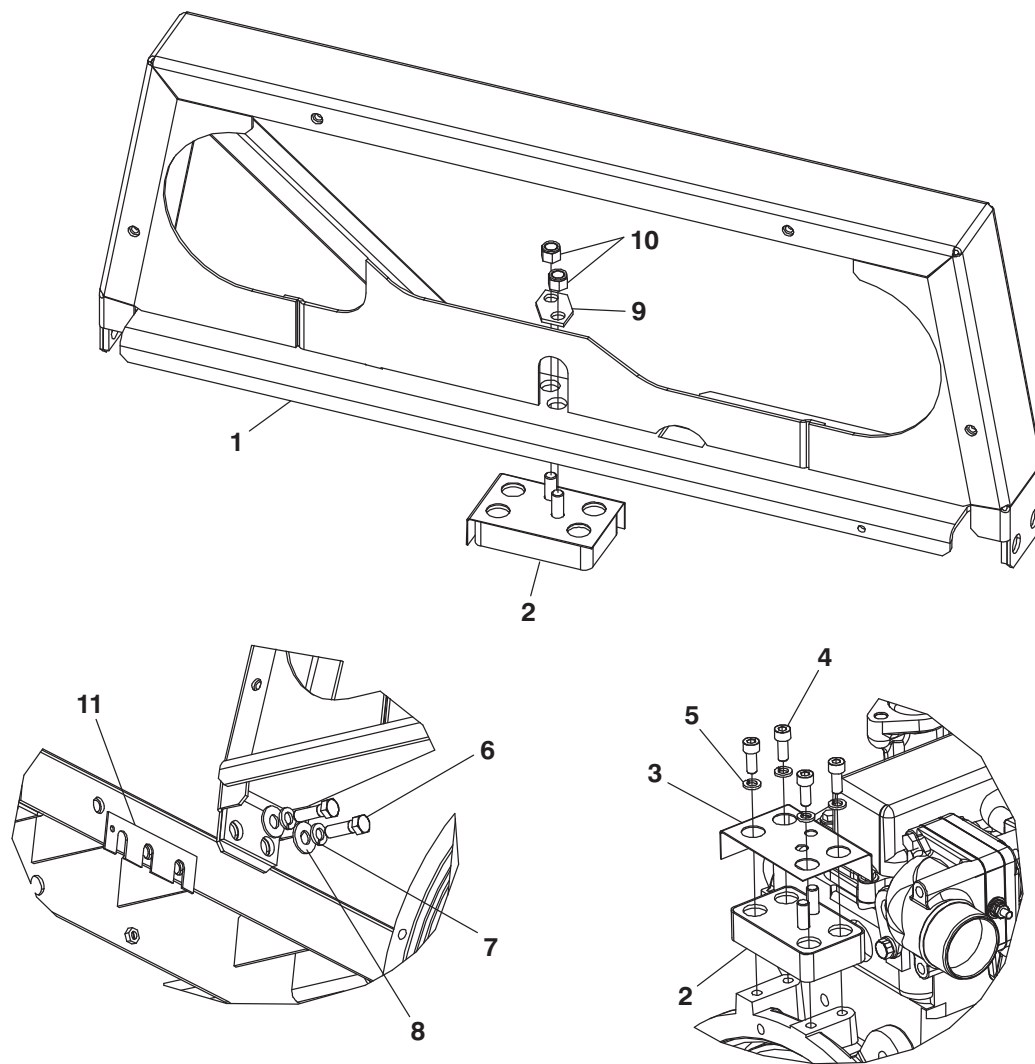
14 DECAL KIT



Item	Part Number	Description	Qty
1	62-11591-00	Label Ctd / Start / Stop, T4I	1
2	62-10572-00	Label Genset	1
3	62-10391-01	Label Protective	2
4	62-10395-01	Label UG Powerline	1
5	62-02895-00	Label Fan Warning	3
6	62-10925-00	Label Attention	2
7	62-11302-00	Decal Warning (Ether)	2
8	62-10572-04	Label RG / UG Emissions	1
9	62-11588-00	Label RG / UG Fuelwise	1
10	62-03957-01	Decal High Voltage	1
11	62-10358-00	Label Danger	1

77-01574-00

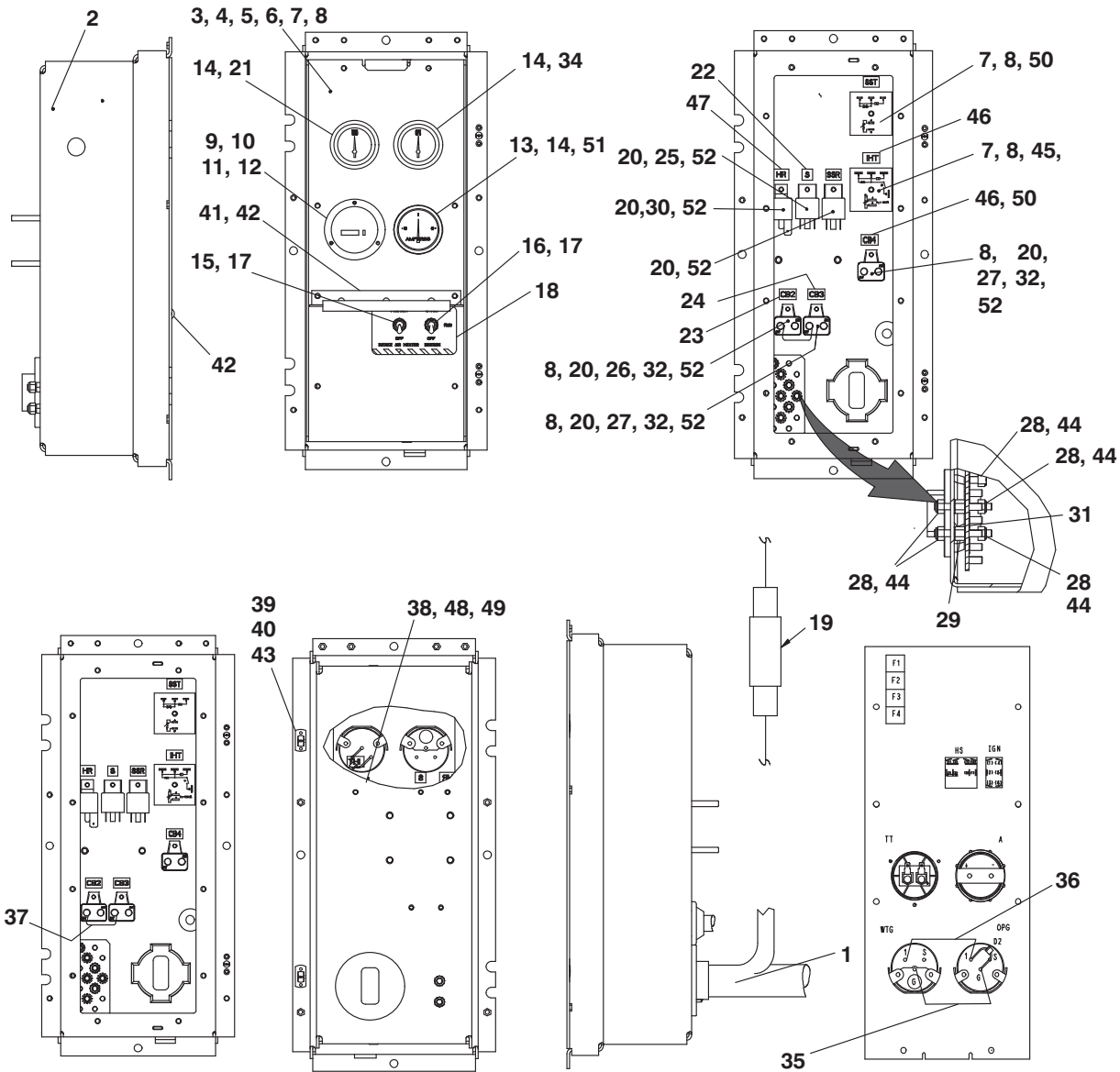
15 SNUBBER KIT



Item	Part Number	Description	Qty
1	86-04687-00	Weld Assembly	1
2	73-00205-00	Shockmount	1
3	68-14812-00	Shield, Heat	1
4	34-06280-20	Screw, Cap M8 X 1.25 Socket Head	4
5	34-01146-08	Washer, Lock M8 Spring	4
6	34-00807-10	Screw, Cap Hex Head 3/8-16 X 1.25	4
7	34-00663-13	Washer, Lock 3/8 Spring	4
8	66U1-5321-17	Washer, Plain 3/8 W Type A	4
9	68-14809-00	Nutplate	1
10	34-00667-13	Nut, Self Lock	2
11	68-14709-00	Spacer	2

77-01335-00

16 CONTROL BOX

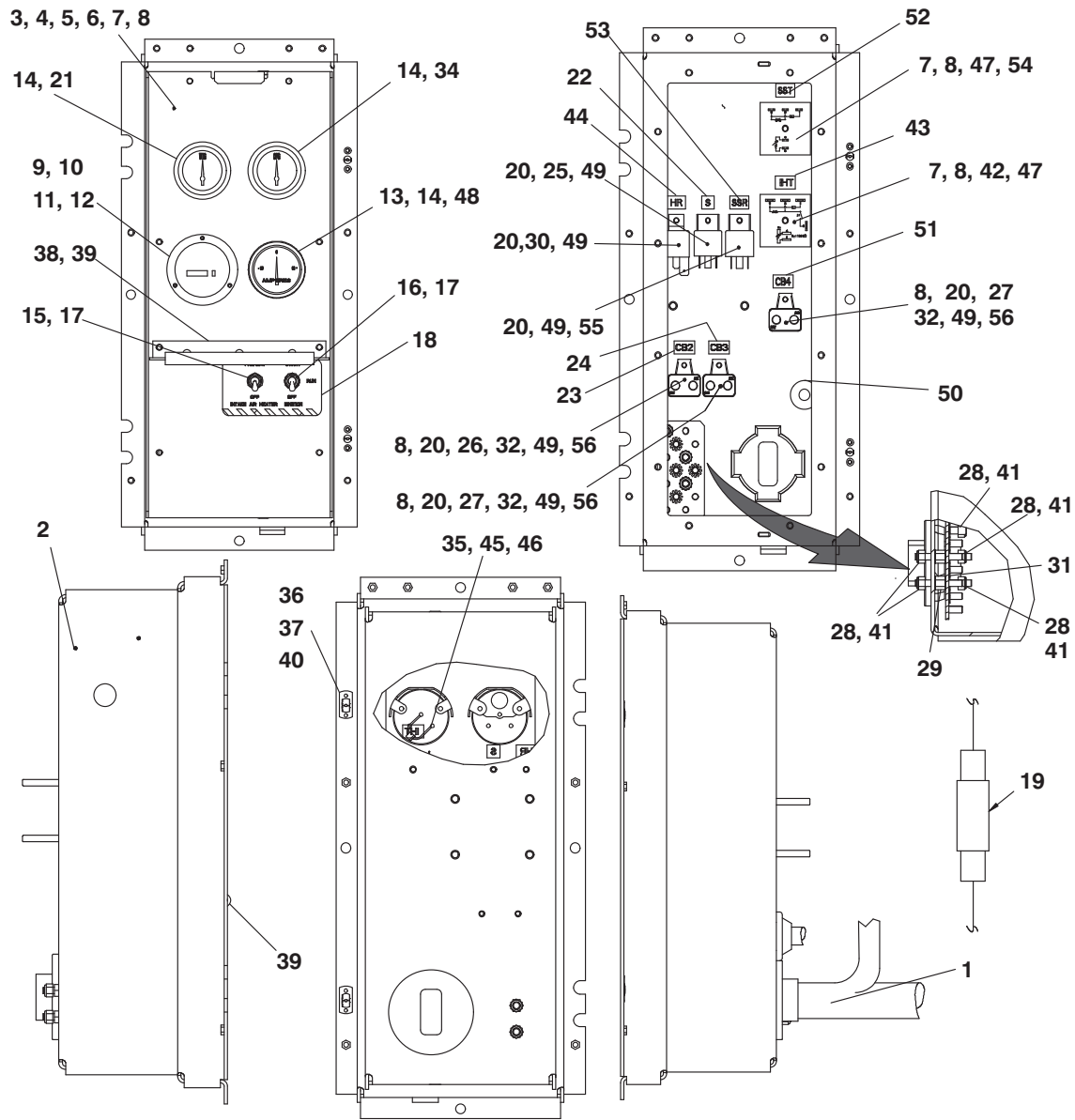


Item	Part Number	Description	Qty
Control Box			
	91-00431-00	Control Box Assembly Includes:	
1	22-04262-00	Wire Harness	1
2	86-04918-00	Box Assembly	1
3	68-16863-00	Panel, Control	1
4	42-00269-06	Gasket	2
5	42-00309-00	Gasket	2
6	66U1-5371-6	Screw, Machine Hex Head #10-24 X 0.750	8
7	66U1-5321-8	Washer, Plain	9
8	66U1-5331-3	Washer, Lock	13
9	10-00448-00	Meter, Hour	1
10	69GS4-1582-1	Gasket	1
11	66U1-6651-15	Screw, Machine Pan Head 3/4	3

16 CONTROL BOX			
12	34-00667-05	Nut, Self Lock	3
13	22-00538-01	Ammeter	1
14	KK71EW223	O-Ring	3
15	10-01129-19	Switch, Toggle	1
16	10-01129-14	Switch, Toggle	1
17	42-00583-00	Seal Panel Bushing	2
18	62-02669-01	Label Ihr & Ign Switches	1
19	66U1-8772	Diode 6 Amp, .250 Q.C.	1
20	66U1-5321-2	Washer, Plain	4
21	12-00097-03	Gauge Dual Water Temp	1
22	66CH1-1002-132	Label "S"	1
23	66U1-3662-21	Label "Cb2"	1
24	66CH1-1002-5	Label "Cb3"	1
25	10-00286-18	Relay	1
26	10-00171-12	Circuit Breaker 30 Amp	1
27	10-00171-13	Circuit Breaker 50 Amp	2
28	34-00667-11	Nut, Self Lock	9
29	66U1-9592-13	Standoff 1/4-20 X 0.375 Long	2
30	10-00328-06	Relay 70A	1
31	69NT41982-2	Strap Assembly Ground	1
32	AT39QA132	Nut, Hex #10-32	4
33	58-00079-02	Sta-Strap (Not Shown on Drawing)	10
34	66U1-2823	Gauge Oil Pressure	1
35	SV44	Wire Assy Sv244	1
36	SV215	Wire Assy Sv215	1
37	SV217	Wire Assy Sv217	1
38	22-01030-54	Diode Assy 6 Amp	1
39	34-01159-02	Receptacle	2
40	34-00928-01	Rivet, Blind	4
41	68-13441-00	Shield	1
42	42-01096-01	Seal	1
43	58-04026-32	Protector	2
44	34-00372-41	Washer, Lock 1/4	9
45	10-00469-00	Relay, 12Vdc, 50-60 Hertz	1
46	62-10530-25	Label "Iht"	1
47	66CH1-1002-38	Label "Hr"	1
48	22-02200-06	Washer, Plain #6	2
49	34-00667-07	Nut, Self Lock	2
50	34-00665-09	Nut, Hex #10-32	1
51	58-00836-13	Spacer Nylon	2
52	34-00667-08	Nut, Self Lock	4

91-00431-00

16 CONTROL BOX



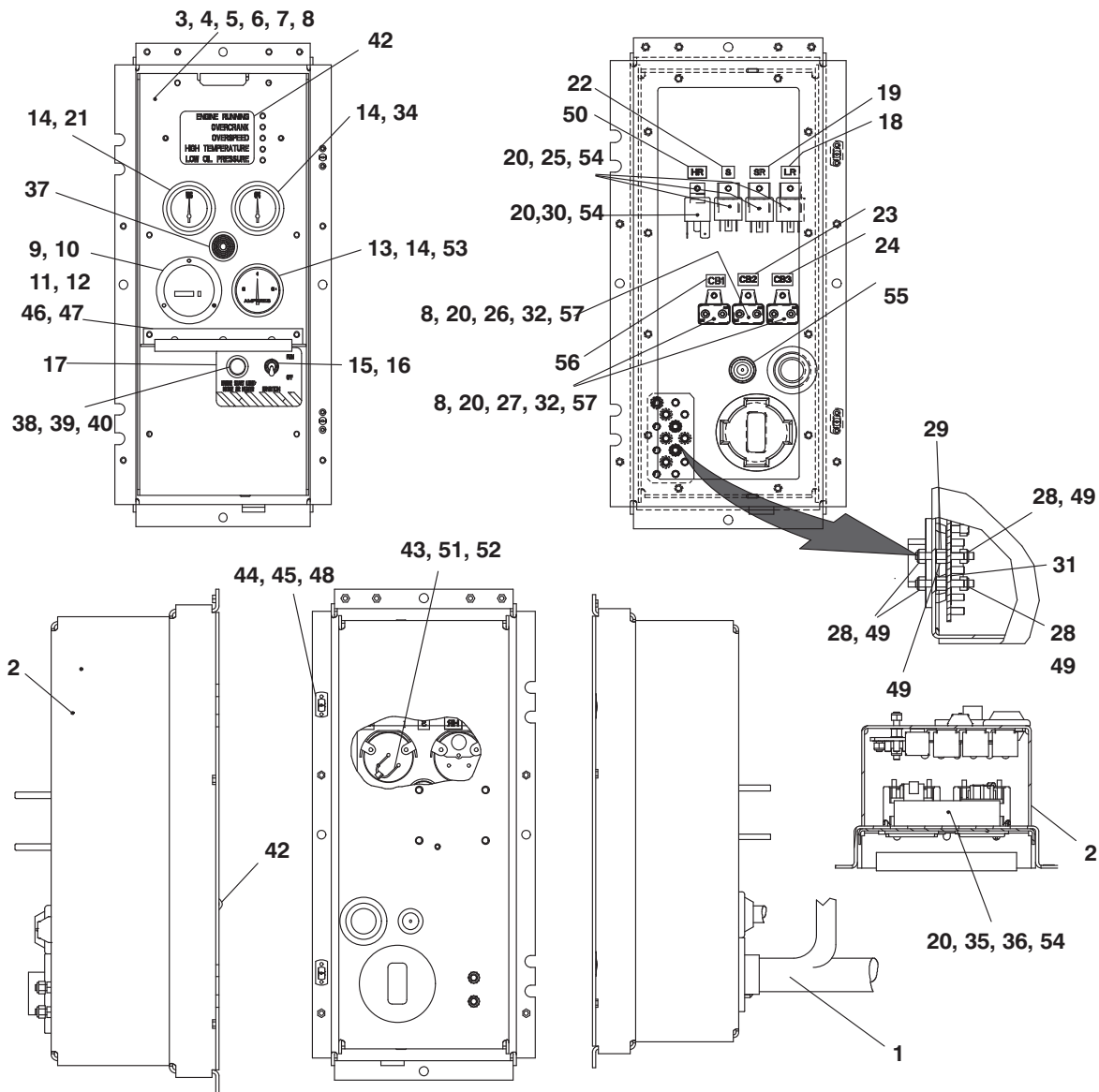
Item	Part Number	Description	Qty
Control Box with GPS			
	91-00431-01	Control Box Assembly with GPS Includes:	
	22-04262-00	Wire Harness	1
53	86-05013-02	Box Assembly	1
54	68-16863-00	Panel, Control	1
55	42-00269-06	Gasket	2
56	42-00309-00	Gasket	2
57	66U-1-5371-6	Screw, Mach Hex Head #10-24 X 0.750	8
58	66U-1-5321-8	Washer, Plain #10 Type A	10
59	66U-1-5331-3	Washer, Lock #10 Spring	16
60	10-00448-00	Meter Hour	1
61	69GS-4-1582-1	Gasket	1
62	66U-1-6651-15	Screw, Mach Pan Head 4-40 X 3/4	3
63	34-00667-05	Nut, Self Lock	3

16 CONTROL BOX

64	22-00538-01	Ammeter	1
65	KK71EW223	O-Ring	3
66	10-01129-19	Switch, Toggle 4-Pole	1
67	10-01129-14	Switch, Toggle On/On/On Momentary	1
68	42-00583-00	Seal Panel Bushing	2
69	62-02669-01	Label Ihr & Ign Switches	1
70	66U-1-8772	Diode 6Amp,.250 Q.C.	1
71	66U-1-5321-2	Washer, Plain #8 Type A	6
72	12-00097-03	Gauge Dual Water Temp	1
73	66CH1-1002-132	Label "S"	1
74	66U1-3662-21	Label "Cb2"	1
75	66CH-1-1002-5	Label "Cb3"	1
76	10-00286-18	Relay	1
77	10-00171-12	Circuit Breaker 30 Amp	1
78	10-00171-13	Circuit Breaker 50 Amp	2
79	34-00667-11	Nut, Self Lock	9
80	66U1-9592-13	Standoff 1/4-20 X 0.375 Long	2
81	10-00328-06	Relay 70A	1
82	69NT41-982-2	Strap Assy Ground	1
83	AT39QA132	Nut, Hex #10-32	6
84	58-00079-02	Sta-Strap (Not Shown on Drawing)	10
85	66U-1-2823	Gauge Oil Pressure	1
86	22-01030-54	Diode Assy 6 Amp	1
87	34-01159-02	Receptacle	2
88	34-00928-01	Rivet, Blind	4
89	68-13441-00	Shield	1
90	42-01096-01	Seal	1
91	58-04026-32	Protector	2
92	34-00372-41	Washer, Lock	9
93	10-00469-00	Relay	1
94	62-10530-25	Label "Iht"	1
95	66CH1-1002-38	Label "Hr"	1
96	22-02200-06	Washer, Plain #6	2
97	34-00667-07	Nut, Self Lock	2
98	34-00665-09	Nut, Hex #10-32	2
99	58-00836-13	Spacer Nylon	2
100	34-00667-08	Nut, Self Lock	6
101	22-04277-00	Harness	1
102	66CH1-1002-4	Label Cb4	1
103	62-10530-31	Label "Sst"	1
104	62-10530-32	Label "Ssr"	1
105	10-00488-00	Timer 15 Sec Delay 2Vdc	1
106	10-00286-03	Relay Sp, St Max 30 Amp	1
107	58-01427-00	Cap Round	6

91-00431-01

16 CONTROL BOX

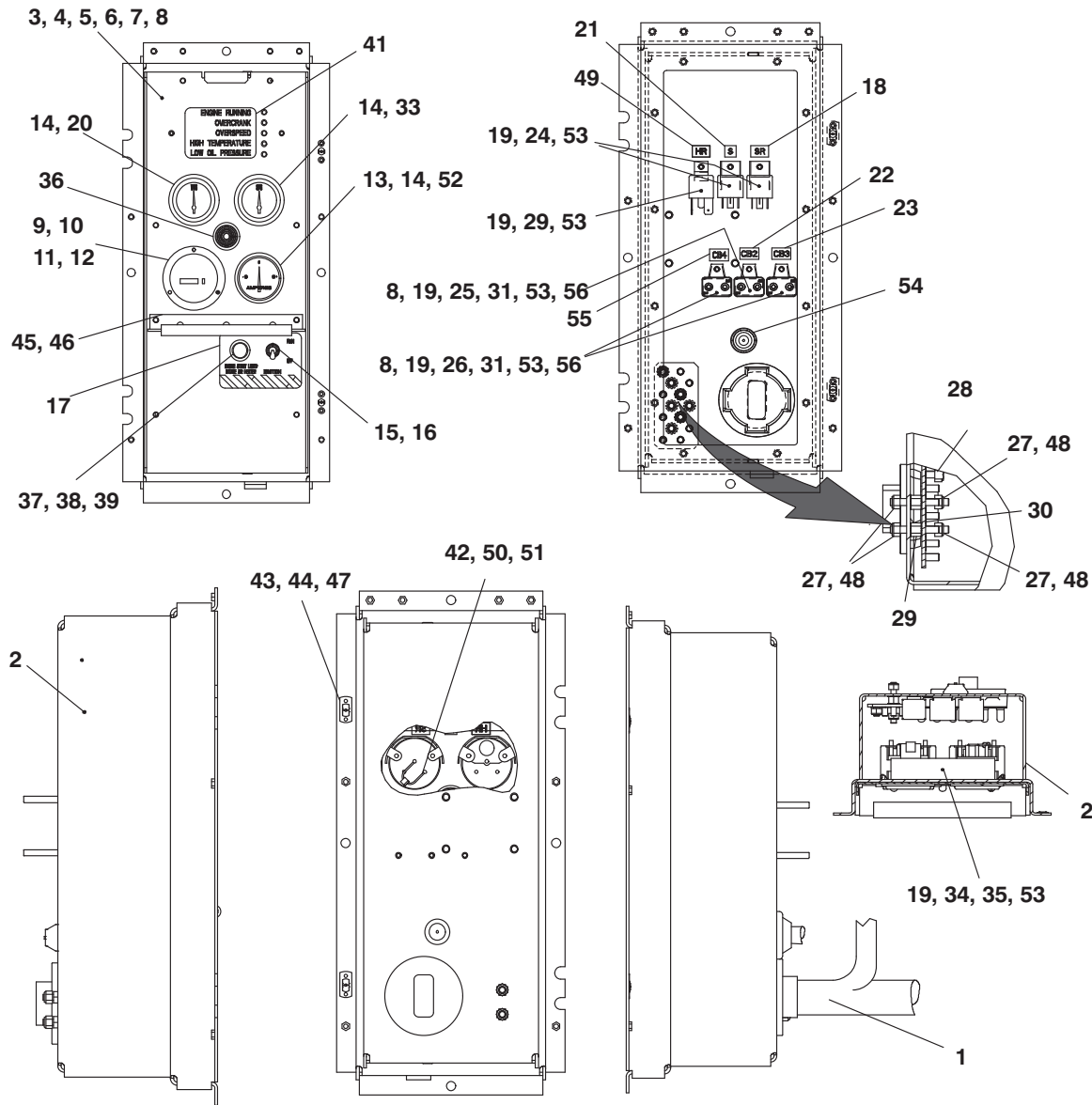


Item	Part Number	Description	Qty
Control Box with Auto Restart, Low Coolant Sensor			
	91-00431-02	Control Box Assembly with Auto Restart & Low Coolant Sensor Includes:	
	22-04262-01	Wire Harness	1
108	86-05013-01	Box Assembly	1
109	68-16863-01	Panel, Control .090 Thk. Alum	1
110	42-00269-06	Gasket	2
111	42-00309-00	Gasket	2
112	66U-1-5371-6	Screw, Machine Hex Head #10-24 X 0.750	8
113	66U-1-5321-8	Washer, Plain #10 Type A	8
114	66U-1-5331-3	Washer, Lock #10 Spring	13
115	10-00448-00	Meter Hour	1
116	69GS-4-1582-1	Gasket	1
117	66U-1-6651-15	Screw, Machine Pan Head #4-40 X 3/4Lg Slt'd.	3
118	34-00667-05	Nut, Self Lock	3

16 CONTROL BOX			
119	22-00538-01	Ammeter	1
120	KK71EW223	O-Ring	3
121	10-01129-18	Switch, Toggle	1
122	42-00583-00	Seal Panel Bushing	1
123	62-02973-04	Label Engine Start	1
124	66CH-1-1002-18	Label	1
125	62-10530-02	Label	1
126	66U-1-5321-2	Washer, Plain #8 Type A	9
127	12-00097-03	Gauge Dual Water Temp	1
128	66CH-1-1002-132	Label "S"	1
129	66U-1-3662-21	Label "Cb2"	1
130	66CH-1-1002-5	Label "Cb3"	1
131	10-00286-02	Relay	3
132	10-00171-12	Circuit Breaker	1
133	10-00171-13	Circuit Breaker	2
134	34-00667-11	Nut, Self Lock	9
135	66U-1-9592-13	Standoff 1/4-20 X 0.375	2
136	10-00328-06	Relay	1
137	69NT41-982-2	Strap Assembly Ground	1
138	AT39QA132	Nut, Hex #10-32	6
139	58-00079-02	Sta-Strap (Not Shown on Drawing)	10
140	66U-1-2823	Gauge Oil Pressure	1
141	12-00477-04	Module Auto-Restart,	1
142	42-00481-00	Gasket	1
143	10-00375-02	Buzzer Warning	1
144	22-00049-00	Lamp	1
145	22-00518-01	Base Pilot Light	1
146	22-00519-01	Jewel Assembly Pilot Light Red	1
147	42-00243-14	O-Ring	1
148	62-10387-01	Label, Lights	1
149	22-01030-54	Diode Assembly	1
150	34-01159-02	Receptacle	2
151	34-00928-01	Rivet, Blind	4
152	68-13441-00	Shield	1
153	42-01096-01	Seal	1
154	58-04026-32	Protector	2
155	34-00372-41	Washer, Lock	11
156	66CH-1-1002-38	Label "Hr"	1
157	22-02200-06	Washer, Plain	2
158	34-00667-07	Nut, Self Lock	2
159	58-00836-13	Spacer Nylon	2
160	34-00667-08	Nut, Self Lock	9
161	22-04277-00	Harness	1
162	66U-1-3662-20	Label "Cb1"	1
163	58-01427-00	Cap	6

91-00431-02

16 CONTROL BOX



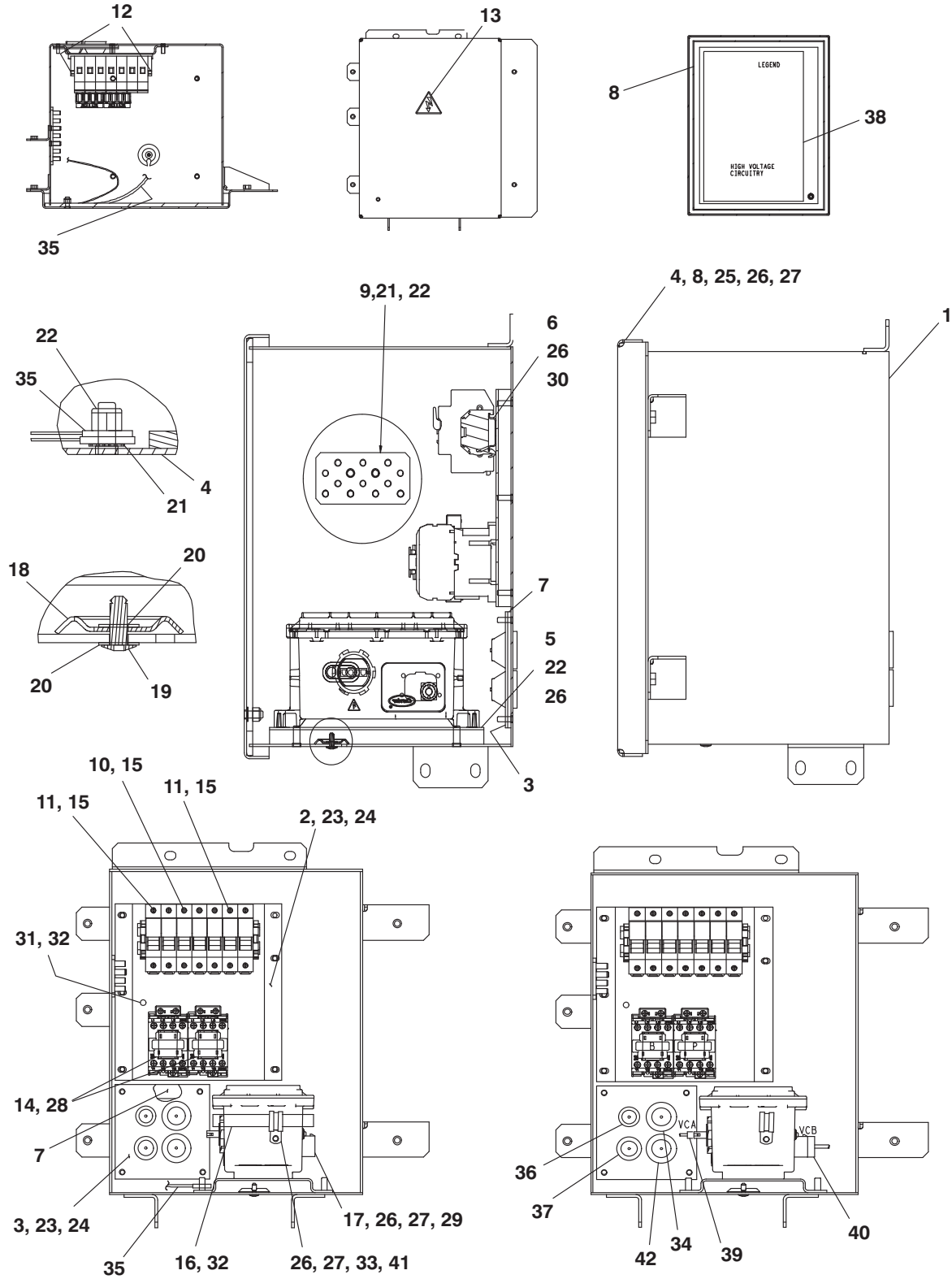
Item	Part Number	Description	Qty
Control Box with Auto Restart			
	91-00431-03	Control Box Assembly with Auto Restart Includes:	
	22-04262-02	Wire Harness	
164	86-05013-03	Box Assembly	
165	68-16863-01	Panel, Control	
166	42-00269-06	Gasket 40	
167	42-00309-00	Gasket 40D	
168	66U-1-5371-6	Screw, Machine Hex Head #10-24 X 0.750	
169	66U-1-5321-8	Washer, Plain #10 Type A	
170	66U-1-5331-3	Washer, Lock #10 Spring	
171	10-00448-00	Meter Hour	
172	69GS-4-1582-1	Gasket	
173	66U-1-6651-15	Screw, Machine Pan Head #4-40 X 3/4	3
174	34-00667-05	Nut, Self Lock	3

16 CONTROL BOX

175	22-00538-01	Ammeter	1
176	KK71EW223	O-Ring	3
177	10-01129-18	Switch, Toggle 2 Pole On/Off	1
178	42-00583-00	Seal Panel Bushing	1
179	62-02973-04	Label Engine Start	1
180	62-10530-02	Label "Sr"	1
181	66U-1-5321-2	Washer, Plain #8 Type A	8
182	12-00097-03	Gauge Dual Water Temp	1
183	66CH-1-1002-132	Label "S"	1
184	66U-1-3662-21	Label "Cb2"	1
185	66CH-1-1002-5	Label "Cb3"	1
186	10-00286-02	Relay	2
187	10-00171-12	Circuit Breaker	1
188	10-00171-13	Circuit Breaker	2
189	34-00667-11	Nut, Self Lock	9
190	66U-1-9592-13	Standoff 1/4-20 X 0.375	2
191	10-00328-06	Relay	1
192	69NT-41-982-2	Strap Assembly Ground	1
193	AT39QA132	Nut, Hex #10-32	6
194	58-00079-02	Sta-Strap (Not Shown on Drawing)	10
195	66U-1-2823	Gauge Oil Pressure	1
196	12-00477-04	Module Auto-Restart,	1
197	42-00481-00	Gasket Closed	1
198	10-00375-02	Buzzer Warning	1
199	22-00049-00	Lamp Incandescent, 12 Vdc	1
200	22-00518-01	Base Pilot Light	1
201	22-00519-01	Jewel Assembly Pilot Light Red	1
202	42-00243-14	O-Ring	1
203	62-10387-01	Label, Lights	1
204	22-01030-54	Diode Assy	1
205	34-01159-02	Receptacle	2
206	34-00928-01	Rivet, Blind	4
207	68-13441-00	Shield	1
208	42-01096-01	Seal	1
209	58-04026-32	Protector	2
210	34-00372-41	Washer, Lock 1/4 Ext Tooth	11
211	66CH-1-1002-38	Label "Hr"	1
212	22-02200-06	Washer, Plain #6	2
213	34-00667-07	Nut, Self Lock	2
214	58-00836-13	Spacer Nylon	2
215	34-00667-08	Nut, Self Lock	8
216	22-04277-00	Harness	1
217	66CH-1-1002-4	Label Cb4	1
218	58-01427-00	Cap	6

91-00431-03

17 ELECTRICAL BOX



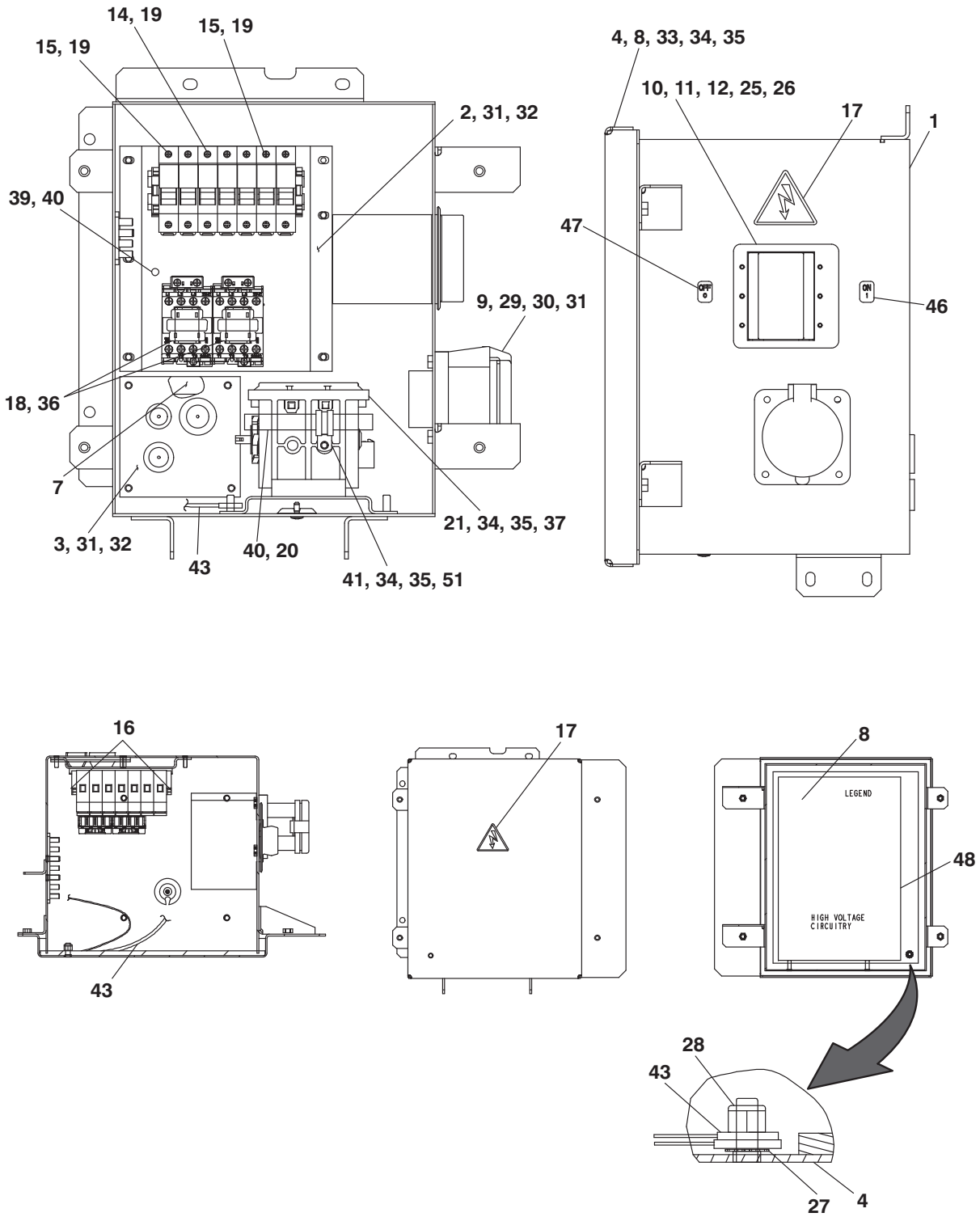
Item	Part Number	Description	Qty
	91-00446-00	Control Box Includes:	
1	86-04991-01	Box Assembly	1
2	68-16798-00	Channel	1

17 ELECTRICAL BOX

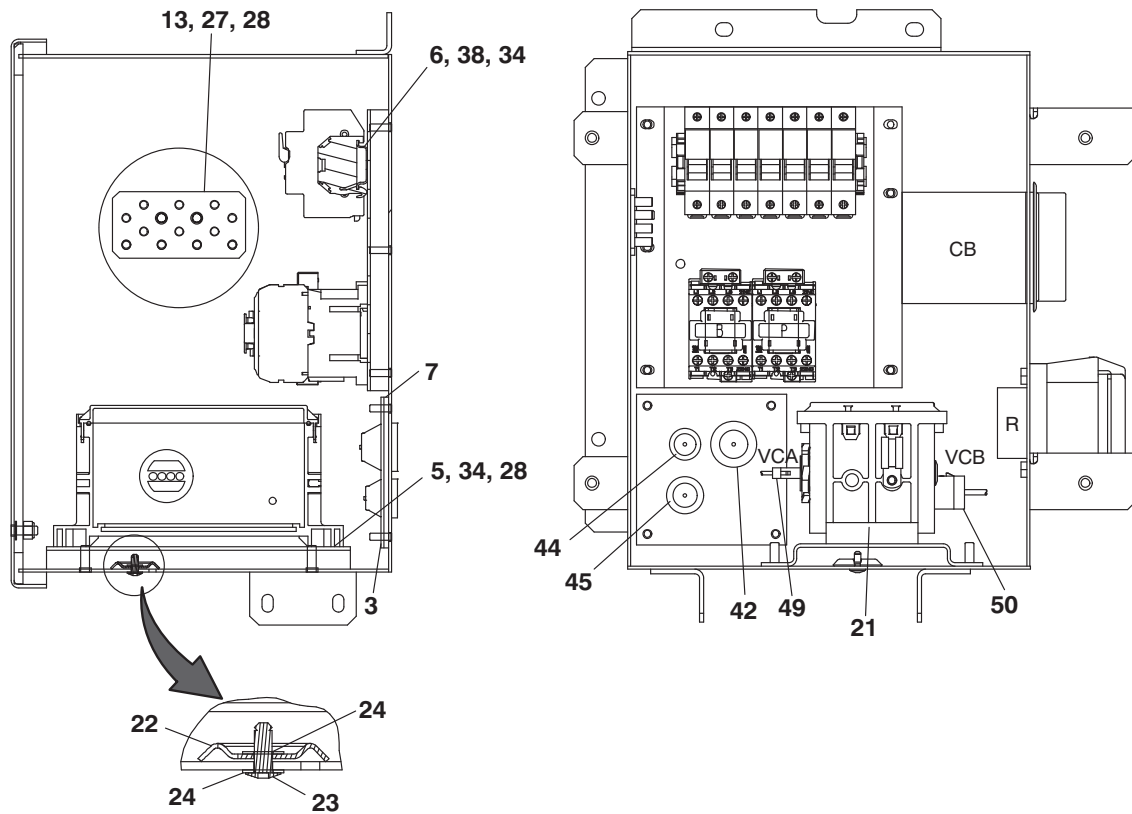
3	68-16799-01	Plate	1
4	86-04941-00	Cover, Box	1
5	68-16801-00	Channel	1
6	68-15626-08	Rail	1
7	42-00751-00	Gasket	1
8	42-00752-00	Gasket	1
9	69NT41-982-3	Strap Assembly	1
10	22-04178-10	Fuse Holder	1
11	22-04178-11	Fuse Holder	2
12	22-04158-00	Stop Din Rail	2
13	62-03957-04	Decal, Warning High Voltage	1
14	10-00431-07	Contacto	2
15	22-01196-24	Fuse	7
16	58-00848-01	Tube, Slit	1
17	12-00707-01	Controller	1
18	58-00660-00	Washer Condensate Drain	1
19	34-00928-13	Rivet, Blind .	1
20	34-00829-09	Washer, Plain #10	2
21	34-00372-41	Washer, Lock 1/4 Ext Tooth	10
22	34-00667-11	Nut, Self Lock	14
23	66U-1-5321-8	Washer, Plain #10 Type A	10
24	34-00795-09	Nut, Self Lock	10
25	66U-1-5361-25	Screw, Cap Hex Head 1/4-20 X0.75	4
26	34-06212-12	Washer, Plain 1/4 N Type A	15
27	AU11JR171	Washer, Lock 1/4 Spring	9
28	34-06253-01	Screw, Cap	4
29	66U-1-5361-47	Bolt, Mach Hex Head 1/4-20 X 1.25	4
30	34-00655-04	Screw, Cap Hex Head 1/4-20 X 0.50	2
31	58-04316-00	Base, Mounting .	1
32	58-00079-02	Sta-Strap	12
33	34-00373-07	Clamp, Tube	1
34	22-04272-00	Wire Harness	1
35	44-00455-01	Cable Wire Rope	1
36	22-04274-00	Wire Harness	1
37	22-04275-00	Wire Harness	1
38	62-11758-00	Label, Schematic 69Ug,T4,Ce	1
39	22-04275-01	Wire Harness	1
40	22-04275-02	Wire Harness	1
41	34-00655-03	Screw, Cap Hex Head 1/4-20 X 0.38	1
42	22-04310-00	Wire Harness	1

91-00446-00

18 RECEPTACLE BOX



18 RECEPTACLE BOX



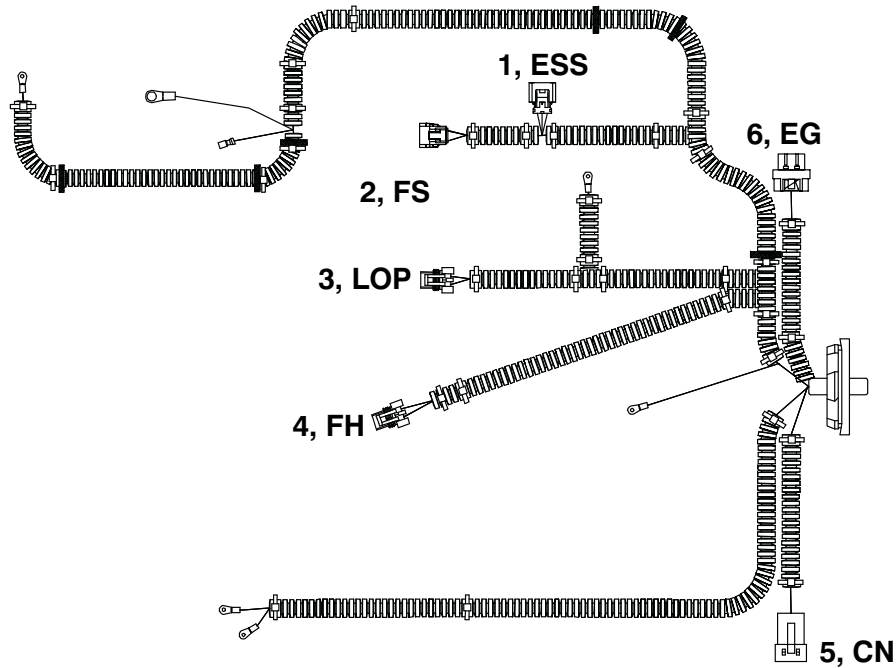
Item	Part Number	Description	Qty
	91-00422-00	Receptacle Box Assembly Includes:	
1	86-04991-00	Receptacle Box	1
2	68-16798-00	Channel	1
3	68-16799-00	Plate	1
4	86-04941-00	Cover, Box	1
5	68-16801-00	Channel	1
6	68-15626-08	Rail	1
7	42-00751-00	Gasket	1
8	42-00752-00	Gasket	1
9	22-01679-00	Receptacle 32 Amp	1
10	66U1-7842-11	Circuit Breaker 480V	1
11	66CH1-1092-4	Boot, Frame	1
12	66U2-1391-1	Boot With Hardware	1
13	69NT41-982-3	Strap Assembly	1
14	22-04178-10	Fuse Holder 3 Poles	1
15	22-04178-11	Fuse Holder 2 Poles	2
16	22-04158-00	Stop Din Rail	2
17	62-03957-04	Decal, Warning High Voltage	2
18	10-00431-07	Contactor 30 Amp	2

18 RECEPTACLE BOX

19	22-01196-24	Fuse	7
20	58-00848-01	Tube, Slit ½ ID	1
21	12-00707-03	Voltage Controller	1
22	58-00660-00	Washer Condensate Drain	1
23	34-00928-13	Rivet, Blind	1
24	34-00829-09	Washer, Plain	2
25	66U1-7842-6	Nut, Hex	6
26	66U1-7842-7	Washer, Flat	12
27	34-00372-41	Washer, Lock 1/4 Ext Tooth	10
28	34-00667-11	Nut, Self Lock	14
29	66U1-5371-6	Screw, Machine Hex Head #10-24 X 0.750 Slt'd	4
30	66U1-5331-3	Washer, Lock #10 Spring	4
31	66U1-5321-8	Washer, Plain #10 Type A	14
32	34-00795-09	Nut, Self Lock	10
33	66U1-5361-25	Screw, Cap Hex Head 1/4-20 X .75	4
34	34-06212-12	Washer, Plain 1/4 N Type A	15
35	AU11JR171	Washer, Lock 1/4 Spring	9
36	34-06253-01	Screw, Cap	4
37	66U1-5361-47	Bolt, Machine Hex Head 1/4-20 X 1.25 Lg	4
38	34-00655-04	Screw, Cap Hex Head 1/4-20 X 0.50	2
39	58-04316-00	Base, Mounting	1
40	58-00079-02	Sta-Strap	12
41	34-00373-07	Clamp, Tube	1
42	22-04272-00	Wire Harness, Generator	1
43	44-00455-01	Cable Wire Rope	1
44	22-04274-00	Wire Harness, Battery Charger	1
45	22-04275-00	Wire Harness, Voltage Controller	1
46	62-02670-00	Label	1
47	62-02670-01	Label	1
48	62-11732-00	Label, Schematic	1
49	22-04275-01	Wire Harness	1
50	22-04275-02	Wire Harness	1
51	34-00655-03	Screw, Cap Hex Head	1

91-00422-00

19 WIRE HARNESS

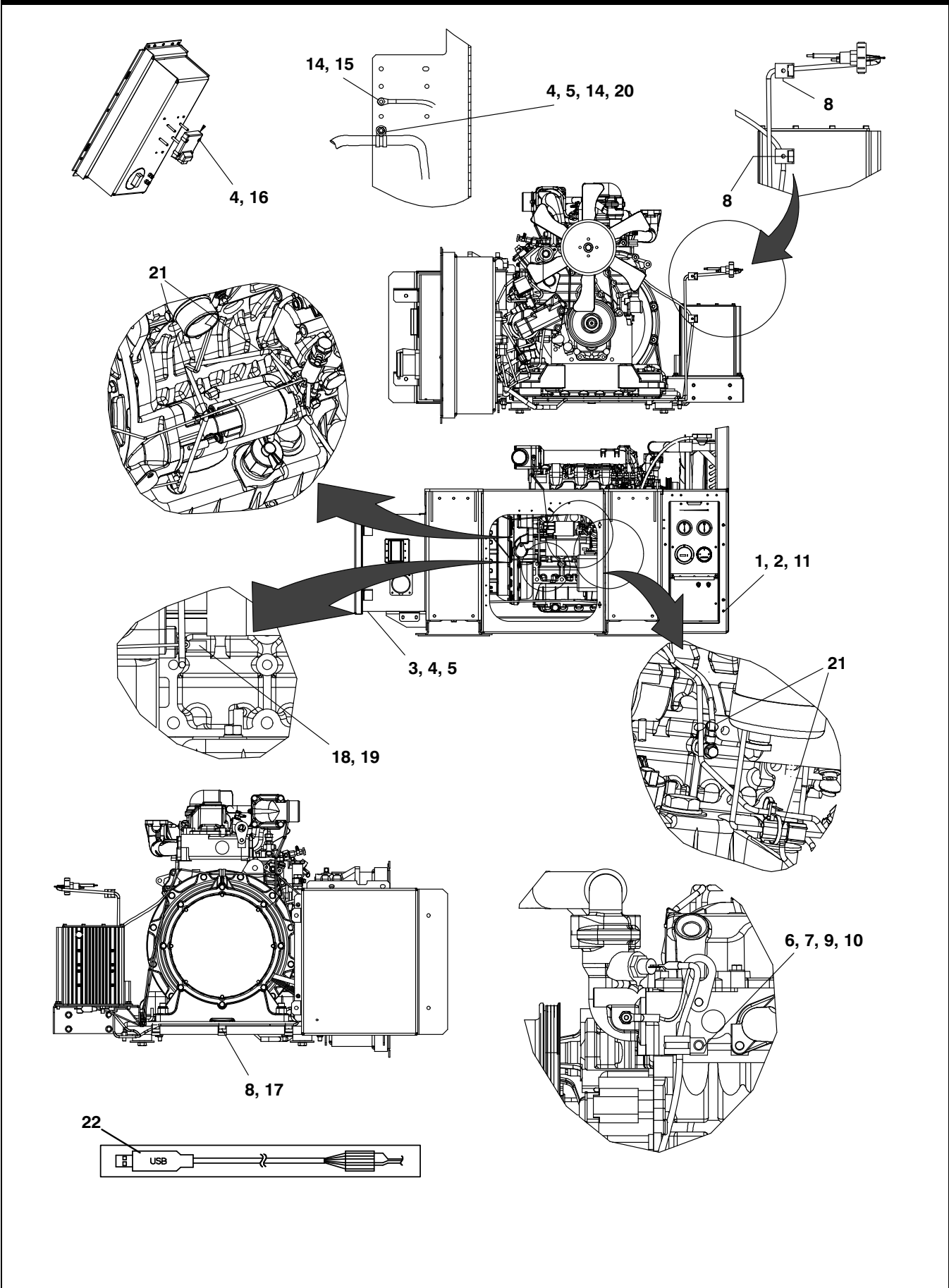


Item	Part Number	Description	Qty
1		Engine Speed Sensor (ESS) Connector - Includes:	
	22-50098-50	Block	1
	22-50098-50A	Terminal	3
	22-50098-50E	Seal	3
	22-50098-50D	Lock	1
2		Fuel Solenoid (FS) Connector - Includes:	
	22-50098-62	Block	1
	22-50098-62C	Terminal	2
	22-50098-62B	Seal	2
3		Low Oil Pressure (LOP) Connector - Includes:	
	22-50078-02	Block	1
	22-01756-01	Terminal	2
	22-50078-51B	Seal	2
	22-50078-01A	Lock	1
4		Fuel Heater (FH) Connector - Includes:	
	22-50078-02	Block	1
	22-01756-02	Terminal	2
	22-50078-51C	Seal	2
	22-50078-01A	Lock	1
5		(CN) Connector - Includes:	
	22-50099-71	Block	1
	22-50099-71A	Lock	1
	22-50099-71B	Socket	2

19 WIRE HARNESS

6		Electronic Governor (EG) Module Connector - Includes:	
	22-50098-61	Block	1
	22-50098-61A	Terminal	11
	22-50098-61C	Plug	15
			22-04262-00

20 VOLTAGE KIT

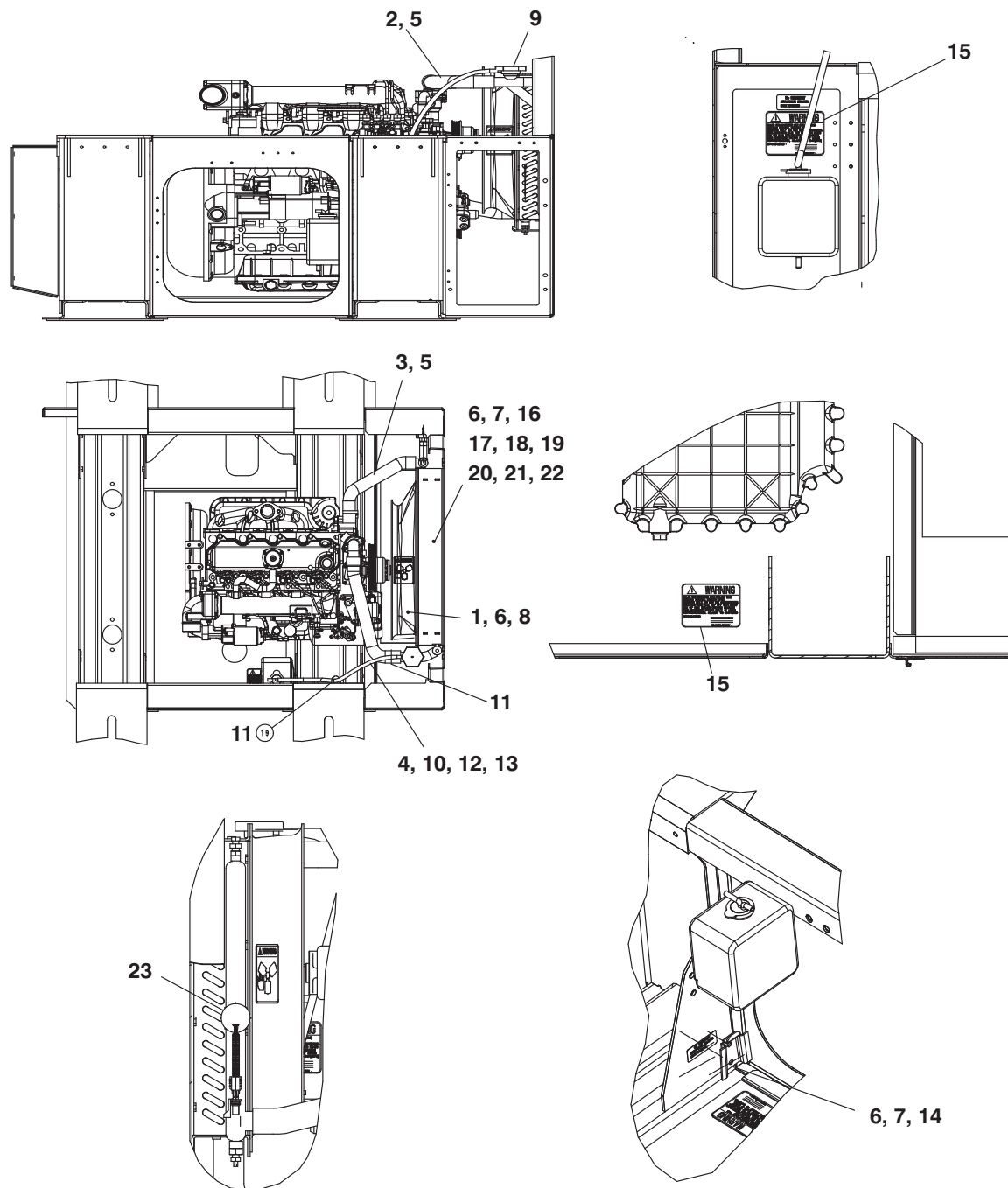


20 VOLTAGE KIT

Item	Part Number	Description	Qty
1	66U1-5371-6	Screw, Mach Hex Head #10-24 X 0.750 Slotted	6
2	66U1-5321-8	Washer, Plain	6
3	34-00655-08	Screw, Cap Hex Head 1/4-20 X 1.00	6
4	34-00662-11	Washer, Plain 1/4	11
5	34-00663-11	Washer, Lock 1/4 Spring	7
6	34-01145-06	Nut Hex M8	1
7	34-01146-08	Washer, Lock	1
8	58-00079-02	Sta-Strap	16
9	44-00102-52	Clamp, Cushioned	1
10	34-01151-08	Washer, Flat M8	1
11	66U1-5331-3	Washer, Lock #10 Spring	6
12	58-01303-01	Tube, Heatshrink (Not on Drawing)	3
13	58-01303-02	Tube, Heatshrink (Not on Drawing)	3
14	34-00655-06	Screw, Cap Hex Head 1/4-20 X 0.75	3
15	34-00372-41	Washer, Lock 1/4	2
16	34-00667-11	Nut, Self Lock	4
17	58-04861-00	Base, Mounting	6
18	34-00372-43	Washer, Lock 3/8	1
19	34-06134-07	Nut, Hex	1
20	44-00102-51	Clamp, Cushioned	1
21	58-00969-00	Wire Tie	4
22	12-00707-20	Voltage Controller Programing Cable	1

77-01575-00

21 COOLANT SYSTEM



Item	Part Number	Description	Qty
Common Parts			
1	58-04585-00	Venturi	1
2	58-04215-00	Hose, Formed	1
3	58-04784-00	Hose, Formed	1
4	58-04184-01	Hose, Fuel	1
5	KA69JM824	Clamp, Hose	4

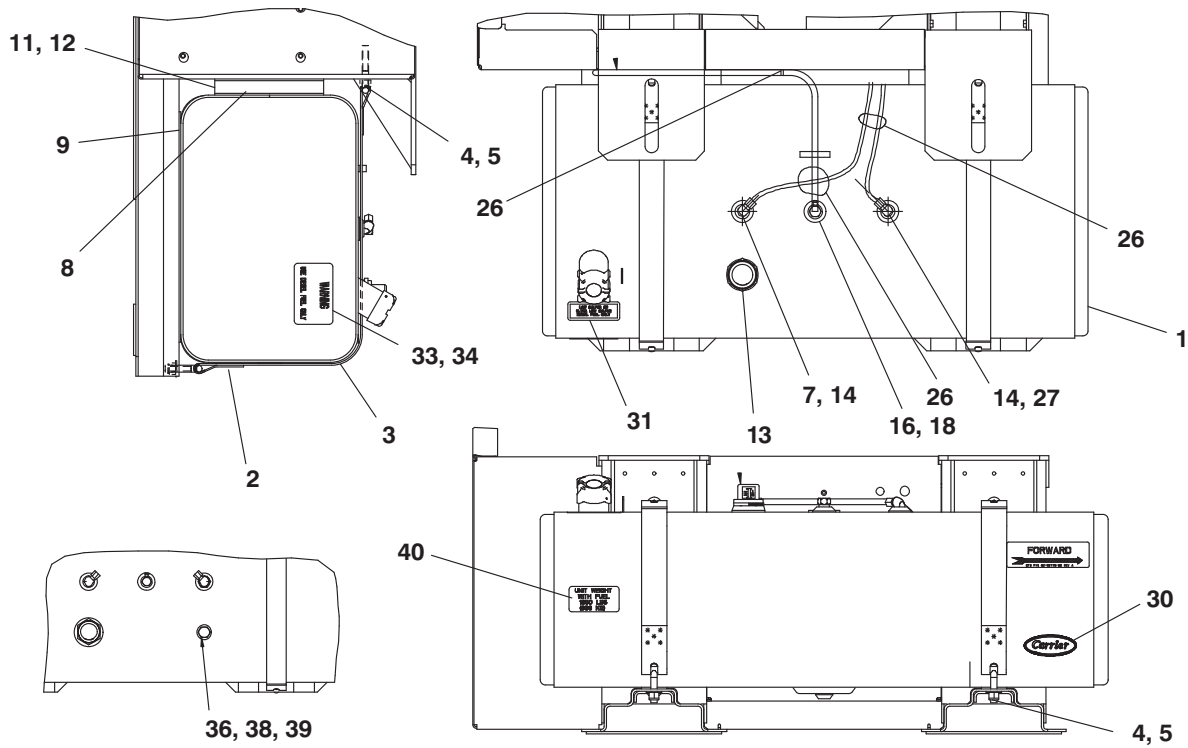
21 COOLANT SYSTEM			
6	66U1-5361-25	Screw, Cap Hex Head 1/4-20 X 0.75	16
7	66U-1-5321-7	Washer, Plain 1/4	8
8	69NT-35-2692-1	Washer, Fender 1/4	8
9	30-00397-00	Cap, Radiator	1
10	44-00388-00	Clamp, Hose	2
11	58-00969-00	Wire Tie	2
12	58-00079-02	Sta-Strap 0-1.75" Diameter Cable	2
13	58-00848-20	Tube, Slit 1/2ld X20Lg Corrogated	1
14	68-14126-00	Bracket	1
15	62-10903-00	Label Warning Cool. Mix	1
16	AU11JR171	Washer, Lock 1/4 Spring	6
Option 1 - Standard Radiator			
17	81-01379-02	Radiator Assembly Includes:	
18	40-00081-00	Vent, Air Brass	1
19	40-00117-01	Drain, Cock, 1/4 NPT Brass	1
Option 2 - Radiator with Low Coolant Sensor			
20	81-04042-01	Radiator Assembly Includes:	
21	40-00081-00	Vent, Air Brass	1
22	40-00117-01	Drain, Cock, 1/4 NPT Brass	1
23	12-00641-00	Low Coolant Sensor	1
			77-01304

22 FUEL SYSTEM KIT

Item	Part Number	Description	Qty
1	30-01122-00	Filter Assembly includes:	1
2	30-01123-00	Replacement Filter	1
3	66CH1-163-30	Tube Assembly	1
4	58-00858-30	Tube, Slit 1/4 ID	1
5	66CH1-163-27	Tube Assembly 1/4	1
6	58-00659-27	Hose, Fuel 3/16 ID X 10.00 Lg	1
7	58-00849-05	Tube, Slit 5/8 ID X 33 Lg Corr	1
8	66U1-5321-5	Washer, Plain 3/8 N Type A	2
9	44-00045-25	Clamp, Hose	8
10	58-00848-02	Tube, Slit 1/2 ID	1
11	58-00079-02	Sta-Strap	21
12	42-01133-00	Seal	2
13	34-00663-13	Washer, Lock 3/8 Spring	3
14	44-00102-54	Clamp, Cushioned	1
15	44-00317-00	Clip 1/2 To 5/8 Tee	1
16	58-00065-46	Grommet	1
17	58-00065-76	Grommet	1
18	44-00102-52	Clamp, Cushioned	1
19	34-00829-13	Washer, Plain 3/8	1
20	34-00662-11	Washer, Plain 1/4	3
21	34-00667-11	Nut, Self Lock	1
22	30-00373-02	Filter	1
23	40-00671-00	Fitting 3/8 Tube X 1/4 Npt	1
24	40-00345-04	Connector, Female 3/8 Tube X 1/4 Npt	1
25	66CH1-163-31	Tube Assembly 3/8 X 8.50	1
26	44-00102-57	Clamp, Cushioned	1
27	34-00928-10	Rivet	3
28	68-15602-00	Bracket	1
29	AU11JR171	Washer, Lock 1/4 Spring	2
30	58-00848-21	Tube, Slit 1/2 ID	1
31	58-00848-19	Tube, Slit 1/2 ID	2
32	58-00969-00	Wire Tie	4
33	58-00848-22	Tube, Slit 1/2 ID	1
34	58-00848-23	Tube, Slit 1/2 ID	1
35	34-00807-08	Screw, Cap Hex Head 3/8-16 X 1.00	3
36	34-00655-08	Screw, Cap Hex Head 1/4-20 X 1.00	3
37	44-00102-56	Clamp, Cushioned	1
38	40-00739-01	Fitting, Fuel Filter	1

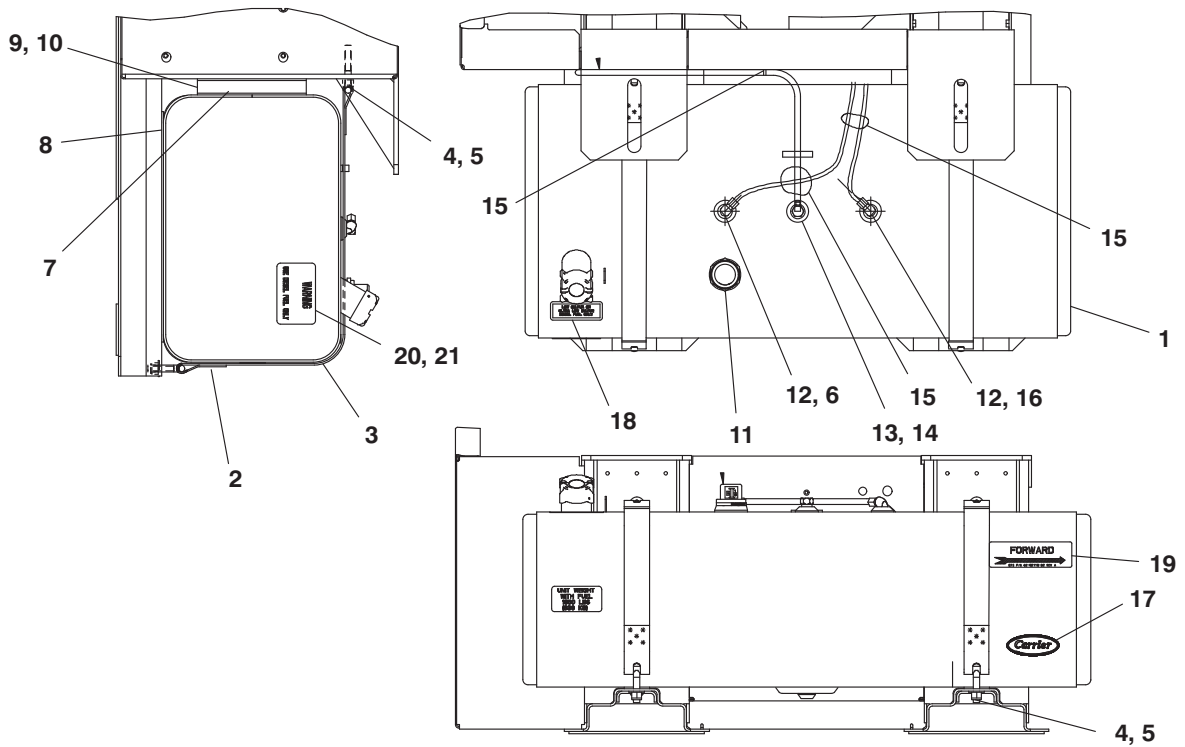
77-01568-00

23 FUEL TANK



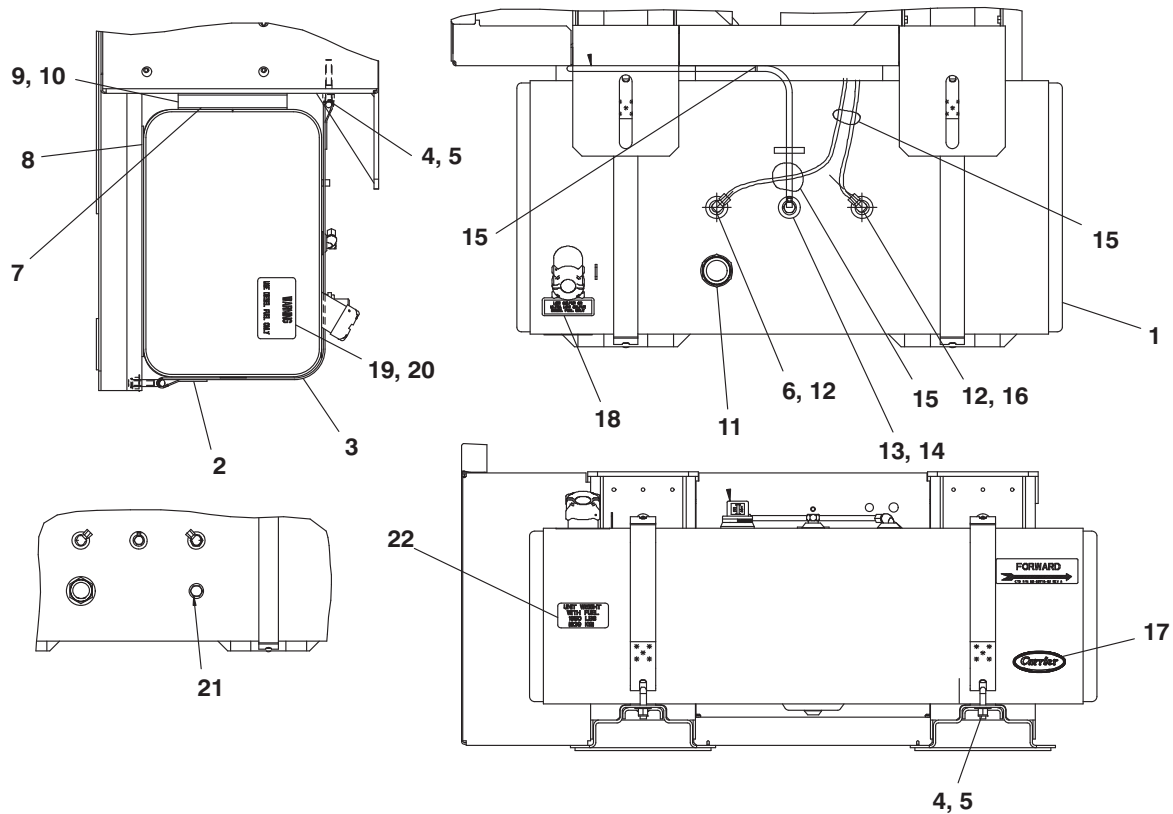
Item	Part Number	Description	Qty
Option 1 - 30 Gallon Tank			
1	65-01102-31	Tank Assembly	1
2	68-11903-08	Strap	2
3	58-04015-01	Pad	2
4	34-00667-15	Nut, Self Lock	4
5	34-01333-00	Washer, Plain	4
7	40-00342-03	Elbow, Male	1
8	58-01183-14	Pad	2
9	58-01183-11	Pad	2
11	68-16152-00	Spacer	2
12	34-00928-14	Rivet, Blind	12
13	12-00747-07	Gauge, Fuel	1
14	81-04093-00	Tube, Pickup	2
16	40-00697-00	Vent	1
18	58-04184-00	Hose, Fuel	1
26	58-00969-00	Wire Tie	3
27	40-00342-01	Elbow, Male	1
30	62-60390-02	Decal	1
31	62-02181-02	Decal	1
33	62-10573-00	Label	1
34	62-10391-01	Label	1
36	--AU--51YA-012	Washer, Gasket	1
38	48-00405-00	Plug, Hex Hd	1
39	62-02695-01	Label	2
40	62-02695-01	Label	2

23 FUEL TANK



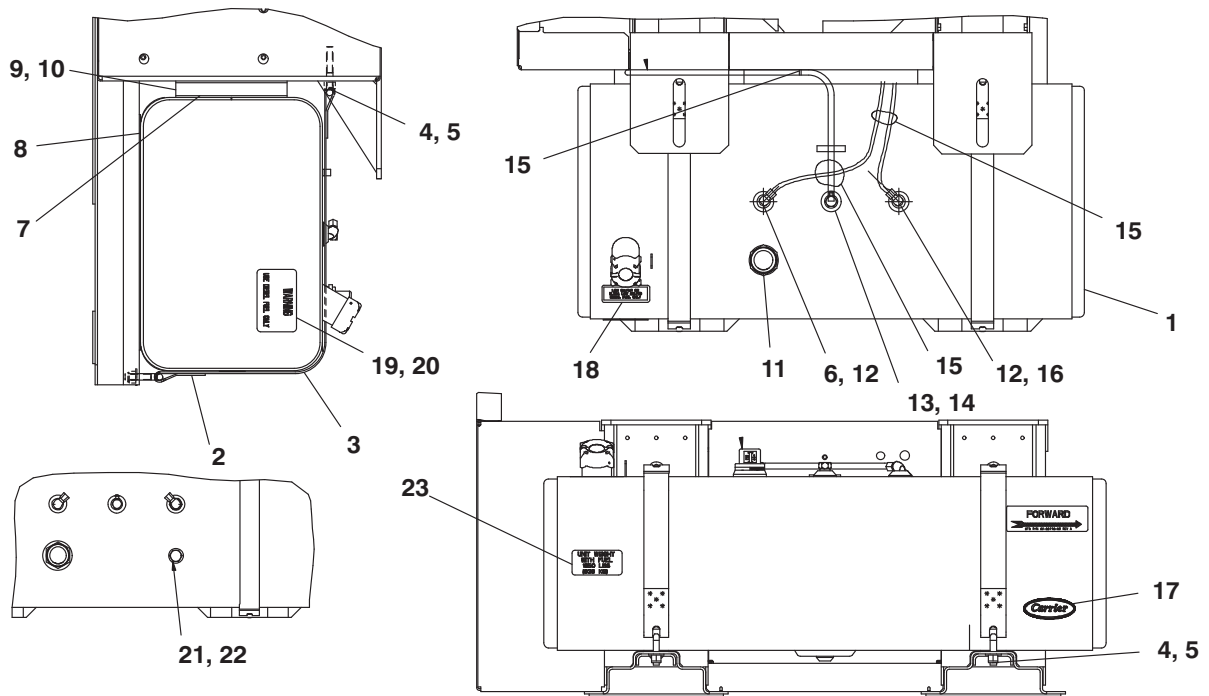
Item	Part Number	Description	Qty
Option 2 - 50 Gallon Tank Painted			
1	65-00178-51	Tank Assembly 50 Gallon Painted	1
2	68-11903-07	Strap Assembly 69Ug Fuel Tank	2
3	58-04015-01	Pad Rubber	2
4	34-00667-15	Nut, Self Lock	4
5	34-01333-00	Washer, Plain 1/2 X .132	4
6	40-00342-03	Elbow, Male 1/4 Npt X 3/8 Tube	1
7	58-01183-14	Pad Rubber	2
8	58-01183-11	Pad Rubber	2
9	68-16152-00	Spacer .125 Thick Aluminum	2
10	34-00928-14	Rivet, Blind .187 Diameter .251-.375	12
11	12-01098-04	Gauge, Fuel	1
12	81-04093-00	Tube, Pickup 69Ug Fuel Tank	2
13	40-00697-00	Vent Fuel Tank	1
14	58-04184-00	Hose, Fuel 1/4 Internal Diameter, Bulk Length	Bulk
15	58-00969-00	Wire Tie 2.80 Diameter Double Loop	3
16	40-00342-01	Elbow, Male 1/4 Tube X 1/4 Npt	1
17	62-60390-02	Decal Carrier	1
18	62-02181-01	Decal Diesel Fuel Only	1
19	62-02718-02	Label Forward	1
20	62-10573-00	Label Genset	1
21	62-10391-01	Label Protective	1
Option 3 - 50 Gallon Tank Painted with TIR			
1	65-00178-53	Tank Assembly 50 Gallon Painted	1

23 FUEL TANK



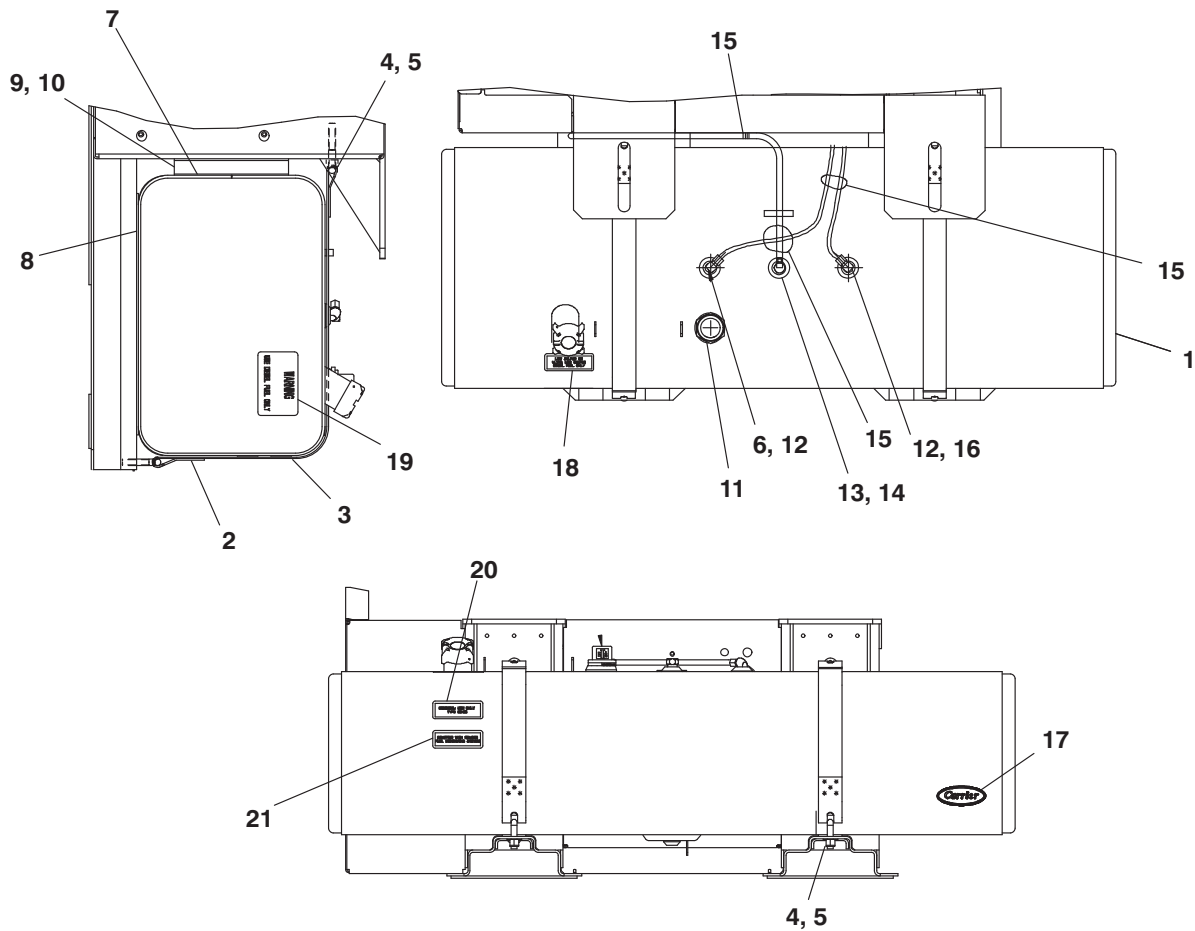
Item	Part Number	Description	Qty
Option 4 - 50 Gallon Tank with Dip Stick			
1	65-00178-51	Tank Assembly 50 Gallon Painted Aluminum	1
2	68-11903-08	Strap	2
3	58-04015-01	Pad	2
4	34-00667-15	Nut, Self Lock	4
5	34-01333-00	Washer, Plain 1/2	4
6	40-00342-03	Elbow, Male 1/4 Npt X 3/8 Tube	1
7	58-01183-14	Pad Rubber	2
8	58-01183-11	Pad Rubber	2
9	68-16152-00	Spacer	2
10	34-00928-14	Rivet, Blind	12
11	12-01098-04	Gauge, Fuel	1
12	81-04093-00	Tube, Pickup	2
13	40-00697-00	Vent Fuel Tank	Bulk
14	58-04184-00	Hose, Fuel 1/4 Internal Diameter	3
15	58-00969-00	Wire Tie	1
16	40-00342-01	Elbow, Male 1/4 Tube X 1/4 Npt	1
17	62-60390-02	Decal Carrier	1
18	62-02181-01	Decal Diesel Fuel Only	1
19	62-10573-00	Label Genset	1
20	62-10391-01	Label Protective	1
21	44-00431-00	Dipstick Fuel Tank	1
22	62-02695-01	Label (Unit Weight)	2

23 FUEL TANK



Item	Part Number	Description	Qty
Option 5 - 50 Gallon Tank and 50 Gallon Tank with Zinc Hardware			
1	65-00178-51	Tank Assembly 50 Gallon Painted Aluminum	1
2	68-11903-08	Strap	2
3	58-04015-01	Pad	2
4	34-00667-15	Nut, Self Lock	4
5	34-01333-00	Washer, Plain 1/2	4
6	40-00342-03	Elbow, Male 1/4 Npt X 3/8 Tube	1
7	58-01183-14	Pad Rubber	2
8	58-01183-11	Pad Rubber	2
9	68-16152-00	Spacer	2
10	34-00928-14	Rivet, Blind	12
11	12-01098-04	Gauge, Fuel	1
12	81-04093-00	Tube, Pickup	2
13	40-00697-00	Vent Fuel Tank	Bulk
14	58-04184-00	Hose, Fuel 1/4 Internal Diameter	3
15	58-00969-00	Wire Tie	1
16	40-00342-01	Elbow, Male 1/4 Tube X 1/4 Npt	1
17	62-60390-02	Decal Carrier	1
18	62-02181-01	Decal Diesel Fuel Only	1
19	62-10573-00	Label Genset	1
20	62-10391-01	Label Protective	1
21	AU51YA012	Washer Gasket	1
22	48-00405-00	Plug, Hex Head 3/4-16	1
23	62-02695-01	Label (Unit Weight)	2
Option 6 - 50 Gallon Tank with TIR Fuel Sensor Port			
1	65-00178-54	Tank Assembly 50 Gallon Painted T.I.R. Fuel Sensor Port	1

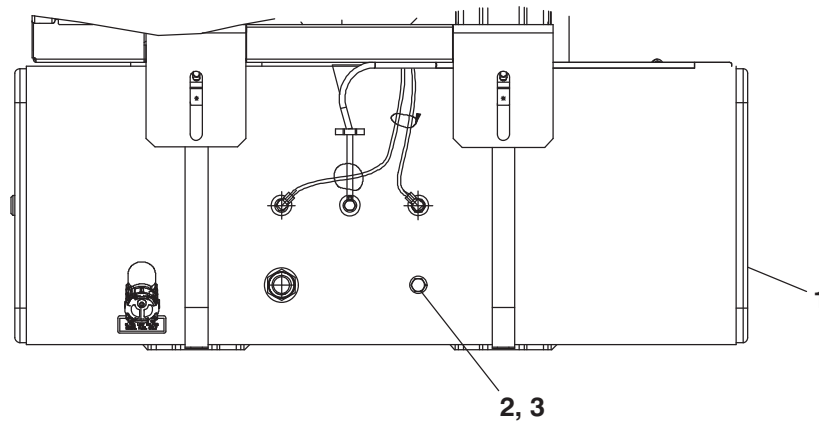
23 FUEL TANK



Item	Part Number	Description	Qty
Option 7 - 65 Gallon Tank			
1	65-00178-66	Tank Assembly 65 Gallon	1
2	68-11903-07	Strap Assembly	2
3	58-04015-01	Pad	2
4	34-00667-15	Nut, Self Lock	4
5	34-00662-15	Washer, Plain	4
6	40-00342-03	Elbow, Male 1/4 Npt X 3/8 Tube	1
7	58-01183-14	Pad Rubber	2
8	58-01183-11	Pad Rubber	2
9	68-16152-00	Spacer	2
10	34-00928-14	Rivet, Blind	12
11	12-01098-04	Gauge, Fuel	1
12	81-04093-00	Tube, Pickup	2
13	40-00697-00	Vent Fuel Tank	1
14	58-04184-00	Hose Fuel Bulk Length	Bulk
15	58-00969-00	Wire Tie	3
16	40-00342-01	Elbow, Male 1/4 Tube X 1/4 Npt	1
17	62-60390-02	Decal Carrier	1
18	62-02181-01	Decal Diesel Fuel Only	1
19	62-10573-00	Label Genset	1

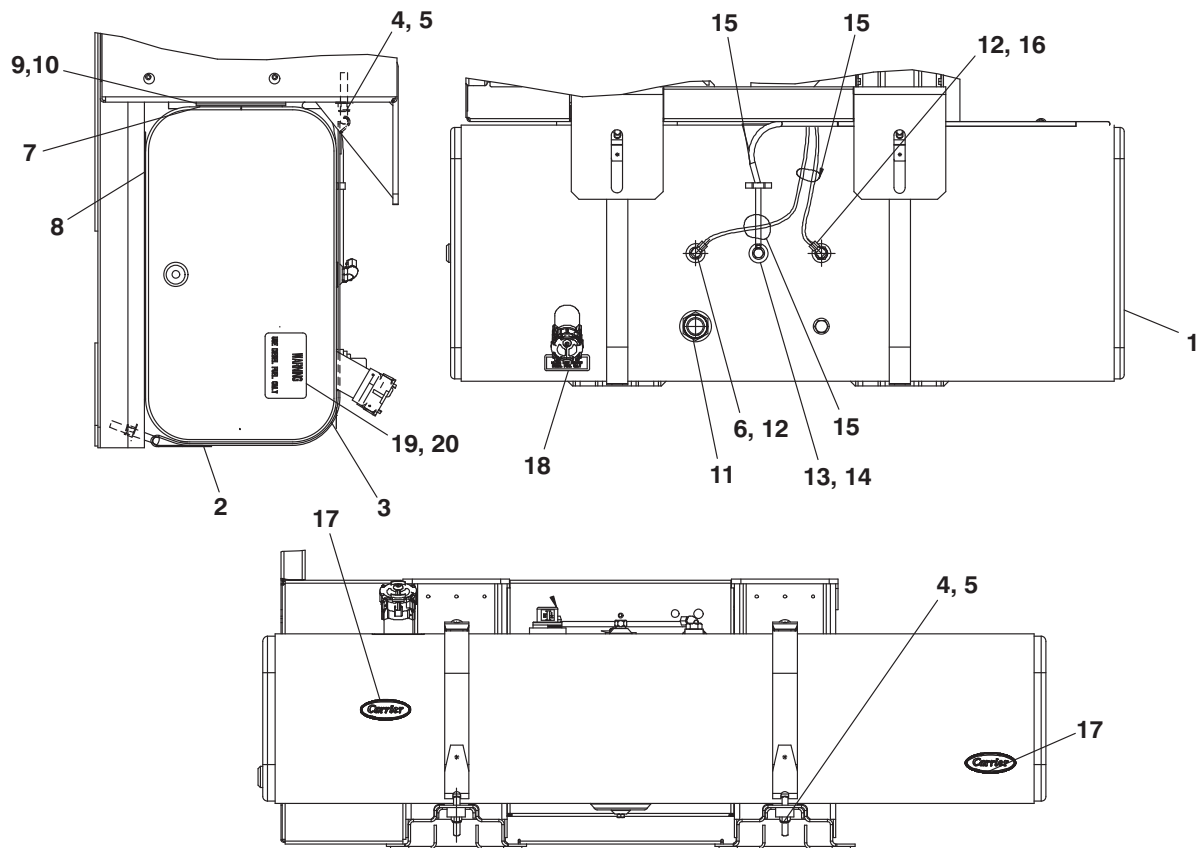
23 FUEL TANK

Item	Part Number	Description	Qty
Option 8 - 65 Gallon Tank with TIR Tabs			
1	65-00178-68	Tank Assembly 65 Gallon	1
2	68-11903-07	Strap Assembly	2
3	58-04015-01	Pad	2
4	34-00667-15	Nut, Self Lock	4
5	34-01330-00	Washer, Plain	4
6	40-00342-03	Elbow, Male 1/4 Npt X 3/8 Tube	1
7	58-01183-14	Pad Rubber	2
8	58-01183-11	Pad Rubber	2
9	68-16152-00	Spacer	2
10	34-00928-14	Rivet, Blind	12
11	12-01098-04	Gauge, Fuel	1
12	81-04093-00	Tube, Pickup	2
13	40-00697-00	Vent Fuel Tank	1
14	58-04184-00	Hose Fuel Bulk Length	Bulk
15	58-00969-00	Wire Tie	3
16	40-00342-01	Elbow, Male 1/4 Tube X 1/4 Npt	1
17	62-60390-02	Decal Carrier	1
18	62-02181-01	Decal Diesel Fuel Only	1
19	62-10573-00	Label Genset	1
20	62-11436-00	Decal B0-B5 Diesel Fuel	1
21	62-11437-00	Label Fuel Monitoring	1



Item	Part Number	Description	Qty
Option 9 - 80 Gallon Tank with Dip Stick			
1	65-00187-81	Tank Assembly 80 Gallon Painted Aluminum with Dip Stick	1
2	44-00431-00	Dipstick Fuel Tank	1
3	AU51YA012	Washer, Gasket	1
Option 10 - 80 Gallon Tank with Plug			
1	65-00187-81	Tank Assembly 80 Gallon Painted Aluminum with Plug	1
2	48-00405-00	Plug, Hex Head 3/4-16-2A	1
3	AU51YA012	Washer, Gasket	1

23 FUEL TANK



Item	Part Number	Description	Qty
Option 11 - 80 Standard Gallon Tank			
1	65-00187-82	Tank Assembly 80 Gallon Painted Aluminum	1
2	68-14858-01	Strap Assembly	2
3	58-04015-04	Pad, Rubber	2
4	34-00667-15	Nut, Self Lock	4
5	34-00662-15	Washer, Plain 1/2	4
6	40-00342-03	Elbow, Male 1/4 Npt X 3/8 Tube	1
7	58-01183-12	Pad	2
8	58-01183-13	Pad	2
9	68-14871-00	Spacer	2
10	34-00928-14	Rivet, Blind	12
11	12-01098-04	Gauge, Fuel	1
12	81-04093-00	Tube, Pickup	2
13	40-00697-00	Vent Fuel Tank	1
14	58-04184-00	Hose 1/4 Inner Diameter Fuel Bulk Length	Bulk
15	58-00969-00	Wire Tie	3
16	40-00342-01	Elbow, Male 1/4 Tube X 1/4 Npt	1
17	62-60390-02	Decal Carrier	1
18	62-02181-01	Decal Diesel Fuel Only	1
19	62-10573-00	Label Genset	1
20	62-10391-01	Label Protective	1

77-01440-00

INDEX

Numerics

10-00158-02	7-10	22-04310-00	17-34
10-00171-12	16-26, 16-28, 16-30, 16-32	22-50078-01A	19-39
10-00171-13	16-26, 16-28, 16-30, 16-32	22-50078-02	19-39
10-00286-02	16-30, 16-32	22-50078-51B	19-39
10-00286-03	16-28	22-50078-51C	19-39
10-00286-18	16-26, 16-28	22-50098-50	19-39
10-00328-06	16-26, 16-28, 16-30, 16-32	22-50098-50A	19-39
10-00375-02	16-30, 16-32	22-50098-50D	19-39
10-00431-07	17-34	22-50098-50E	19-39
10-00448-00	16-25, 16-27, 16-29, 16-31	22-50098-61	19-40
10-00469-00	16-26, 16-28	22-50098-61A	19-40
10-00488-00	16-28	22-50098-61C	19-40
10-01129-14	16-26, 16-28	22-50098-62	19-39
10-01129-18	16-30, 16-32	22-50098-62B	19-39
10-01129-19	16-26, 16-28	22-50098-62C	19-39
12-00097-03	16-26, 16-28, 16-30, 16-32	22-50099-71	19-39
12-00098-04	7-10	22-50099-71A	19-39
12-00477-04	16-30, 16-32	22-50099-71B	19-39
12-00592-02	7-10	26	7-10
12-00641-00	21-44	30-00356-00	4-6
12-00707-01	17-34	30-00373-02	22-46
12-00707-20	20-42	30-00397-00	21-44
12-00747-07	23-47	30-00406-01	5-7, 6-8
12-01098-04	23-48, 23-49, 23-50, 23-51, 23-52, 23-53	30-00426-05	5-7, 6-8
22-00049-00	16-30, 16-32	30-00426-24	5-7, 6-8
22-00518-01	16-30, 16-32	30-00426-25	5-7, 6-8
22-00519-01	16-30, 16-32	30-00446-00	6-8
22-00538-01	16-26, 16-28, 16-30, 16-32	30-00460-06	12-19
22-01030-54	16-26, 16-28, 16-30, 16-32	30-00473-04	4-6, 9-16
22-01196-24	17-34	30-00473-20	4-6
22-01633-88	8-14	30-01122-00	22-46
22-01633-89	8-14	30-01123-00	22-46
22-01756-01	19-39	30-50349-00	8-14
22-01756-02	19-39	34-00304-14	7-11
22-02200-06	16-26, 16-28, 16-30, 16-32	34-00363-18	9-16
22-04158-00	17-34	34-00372-41	16-26, 16-28, 16-30, 16-32, 17-34, 20-42
22-04178-10	17-34	34-00372-43	8-14, 20-42
22-04178-11	17-34	34-00373-07	17-34
22-04262-00	16-25, 16-27	34-00559-08	7-11
22-04262-01	16-29	34-00655-03	17-34
22-04262-02	16-31	34-00655-04	17-34
22-04272-00	17-34	34-00655-06	12-19, 13-20, 20-42
22-04274-00	17-34	34-00655-08	20-42, 22-46
22-04275-00	17-34	34-00662-11	12-19, 13-21, 20-42, 22-46
22-04275-01	17-34	34-00662-12	8-14
22-04275-02	17-34	34-00662-15	23-51, 23-53
22-04277-00	16-28, 16-30, 16-32	34-00663-11	12-19, 20-42
		34-00663-13	7-10, 8-14, 13-21, 15-24, 22-46

34-00665-09	16-26, 16-28	34-06157-01	9-16
34-00667-05	16-26, 16-27, 16-29, 16-31	34-06158-00	9-16
34-00667-07	16-26, 16-28, 16-30, 16-32	34-06158-02	9-16
34-00667-08	16-26, 16-28, 16-30, 16-32	34-06158-21	9-16
34-00667-11	4-6, 5-7, 6-8, 16-26, 16-28, 16-30, 16-32, 17-34, 20-42, 22-46	34-06158-22	9-16
34-00667-12	8-14	34-06159-50	9-16
34-00667-13	7-10, 15-24	34-06169-00	13-21
34-00667-15	7-10, 23-47, 23-48, 23-49, 23-50, 23-51, 23-52, 23-53	34-06212-12	17-34
34-00795-09	17-34	34-06212-14	8-14
34-00795-17	7-10	34-06247-06	8-14
34-00804-18	7-10	34-06253-01	17-34
34-00807-08	7-10, 8-14, 22-46	34-06280-20	15-24
34-00807-10	13-21, 15-24	38-00252-00	7-10
34-00807-12	7-10	40-00067-01	7-10
34-00829-09	17-34	40-00081-00	21-44
34-00829-13	7-10, 22-46	40-00107-01	7-10
34-00829-15	7-10	40-00117-01	21-44
34-00833-28	7-10	40-00342-01	23-47, 23-48, 23-49, 23-50, 23-51, 23-52, 23-53
34-00890-10	7-10	40-00342-03	23-47, 23-48, 23-49, 23-50, 23-51, 23-52, 23-53
34-00928-01	16-26, 16-28, 16-30, 16-32	40-00345-04	22-46
34-00928-02	13-21	40-00506-00	5-7, 6-8
34-00928-05	13-21, 13-22	40-00671-00	22-46
34-00928-10	5-7, 6-8, 22-46	40-00697-00	23-47, 23-48, 23-49, 23-50, 23-51, 23-52, 23-53
34-00928-13	13-20, 13-21, 17-34	40-00739-01	22-46
34-00928-14	13-20, 23-47, 23-48, 23-49, 23-50, 23-51, 23-52, 23-53	42-00174-42	13-21
34-01142-01	13-21	42-00174-43	13-21
34-01145-06	20-42	42-00243-14	16-30, 16-32
34-01146-08	15-24, 20-42	42-00269-06	16-25, 16-27, 16-29, 16-31
34-01146-58	7-11	42-00309-00	16-25, 16-27, 16-29, 16-31
34-01151-08	7-11, 20-42	42-00481-00	16-30, 16-32
34-01153-25	7-11	42-00483-00	13-21
34-01159-02	16-26, 16-28, 16-30, 16-32	42-00484-00	13-21
34-01226-00	13-21	42-00583-00	16-26, 16-28, 16-30, 16-32
34-01319-00	7-11	42-00751-00	17-34
34-01330-00	23-52	42-00752-00	17-34
34-01333-00	23-47, 23-48, 23-49, 23-50	42-01096-01	16-26, 16-28, 16-30, 16-32
34-01369-50	7-11	42-01133-00	22-46
34-06003-08	13-21	44-00045-25	22-46
34-06014-12	12-19	44-00102-51	20-42
34-06026-02	9-16	44-00102-52	20-42, 22-46
34-06029-08	7-11	44-00102-54	22-46
34-06053-03	13-21	44-00102-56	22-46
34-06060-01	7-10	44-00102-57	8-14, 22-46
34-06060-02	7-10	44-00102-68	12-19
34-06134-07	8-14, 20-42	44-00317-00	22-46
34-06151-00	9-16	44-00352-01	13-20, 13-21
34-06151-01	9-16	44-00388-00	21-44
34-06151-02	9-16	44-00399-01	13-21
34-06157-00	9-16	44-00431-00	23-49, 23-52

44-00447-00	4-6	58-04428-00	13-21
44-00454-00	5-7, 6-8	58-04585-00	21-43
44-00455-01	17-34	58-04780-00	5-7, 6-8
48-00405-00	23-47, 23-50, 23-52	58-04780-01	4-6
48-00459-00	7-11	58-04784-00	21-43
48-01049-00	7-11	58-04861-00	20-42
50-00230-00	7-11	62-02181-01	23-48, 23-49, 23-50, 23-51, 23-52, 23-53
50-01195-00	7-11	62-02181-02	23-47
50-60330-03	7-10	62-02669-01	16-26, 16-28
54-00669-20	7-10	62-02695-01	23-47, 23-49, 23-50
54-00669-21	7-11	62-02718-02	23-48
54-00669-22	7-11	62-02895-00	14-23
58-00065-46	22-46	62-02973-04	16-30, 16-32
58-00065-76	22-46	62-03957-01	14-23
58-00079-02	7-11, 8-14, 16-26, 16-28, 16-30, 16-32, 17-34, 20-42, 21-44, 22-46	62-03957-04	13-21, 17-34
		62-10358-00	14-23
58-00659-27	22-46	62-10387-01	16-30, 16-32
58-00660-00	17-34	62-10391-01	14-23, 23-47, 23-48, 23-49, 23-50, 23-53
58-00836-13	16-26, 16-28, 16-30, 16-32		
58-00848-01	17-34	62-10395-01	14-23
58-00848-02	22-46	62-10396-00	9-16
58-00848-19	22-46	62-10530-02	16-30, 16-32
58-00848-20	21-44	62-10530-25	16-26, 16-28
58-00848-21	22-46	62-10530-31	16-28
58-00848-22	22-46	62-10530-32	16-28
58-00848-23	22-46	62-10572-00	14-23
58-00849-05	22-46	62-10572-04	14-23
58-00858-00	7-10	62-10573-00	23-47, 23-48, 23-49, 23-50, 23-51, 23-52, 23-53
58-00858-30	22-46		
58-00969-00	20-42, 21-44, 22-46, 23-47, 23-48, 23-49, 23-50, 23-51, 23-52, 23-53	62-10903-00	21-44
		62-10925-00	14-23
58-01183-11	23-47, 23-48, 23-49, 23-50, 23-51, 23-52	62-11302-00	14-23
		62-11436-00	23-52
58-01183-12	23-53	62-11437-00	23-52
58-01183-13	23-53	62-11588-00	14-23
58-01183-14	23-47, 23-48, 23-49, 23-50, 23-51, 23-52	62-11591-00	14-23
		62-11758-00	17-34
58-01303-01	20-42	62-60390-02	23-47, 23-48, 23-49, 23-50, 23-51, 23-52, 23-53
58-01303-02	20-42		
58-01427-00	16-28, 16-30, 16-32	65-00178-51	23-48, 23-49, 23-50
58-04015-01	23-47, 23-48, 23-49, 23-50, 23-51, 23-52	65-00178-53	23-48
		65-00178-54	23-50
58-04015-04	23-53	65-00178-66	23-51
58-04026-32	16-26, 16-28, 16-30, 16-32	65-00178-68	23-52
58-04102-03	5-7, 6-8	65-00187-81	23-52
58-04184-00	23-47, 23-48, 23-49, 23-50, 23-51, 23-52, 23-53	65-00187-82	23-53
		65-01102-31	23-47
58-04184-01	21-43	66CH-1-1002-132	16-30, 16-32
58-04215-00	21-43	66CH1-1002-132	16-26, 16-28
58-04316-00	17-34	66CH-1-1002-18	16-30
		66CH-1-1002-38	16-30, 16-32

66CH1-1002-38	16-26, 16-28	68-11903-08	23-47, 23-49, 23-50
66CH-1-1002-4	16-32	68-12069-02	9-16
66CH1-1002-4	16-28	68-12650-00	7-11
66CH-1-1002-5	16-28, 16-30, 16-32	68-12814-02	13-21
66CH1-1002-5	16-26	68-13439-02	13-21
66CH1-163-27	22-46	68-13440-01	9-16
66CH1-163-30	22-46	68-13441-00	16-26, 16-28, 16-30, 16-32
66CH1-163-31	22-46	68-14126-00	21-44
66U1-2552-173	13-21	68-14252-00	13-22
66U-1-2823	16-28, 16-30, 16-32	68-14535-00	13-20
66U1-2823	16-26	68-14709-00	13-21, 15-24
66U1-2823-3	7-10	68-14809-00	15-24
66U-1-3662-20	16-30	68-14812-00	15-24
66U-1-3662-21	16-30, 16-32	68-14858-01	23-53
66U1-3662-21	16-26, 16-28	68-14871-00	23-53
66U1-5321-17	13-21, 15-24	68-15491-00	5-7, 6-8
66U-1-5321-2	16-28, 16-30, 16-32	68-15522-01	13-20
66U1-5321-2	16-26	68-15602-00	22-46
66-U-1-5321-3	4-6	68-15626-08	17-34
66U-1-5321-3	5-7, 6-8	68-16152-00	23-47, 23-48, 23-49, 23-50, 23-51, 23-52
66U1-5321-5	22-46	68-16776-01	13-21
66U-1-5321-7	21-44	68-16798-00	17-33
66U1-5321-7	13-21	68-16799-01	17-34
66U-1-5321-8	16-27, 16-29, 16-31, 17-34	68-16801-00	17-34
66U1-5321-8	16-25, 20-42	68-16863-00	16-25, 16-27
66U1-5321-9	7-10	68-16863-01	16-29, 16-31
66U-1-5331-3	16-27, 16-29, 16-31	68-16964-00	13-20
66U1-5331-3	16-25, 20-42	68-17019-01	13-21
66U1-5331-8	7-10	68-17382-00	8-14
66U-1-5361-25	5-7, 6-8, 17-34	69GS-4-1582-1	16-27, 16-29, 16-31
66U1-5361-25	21-44	69GS4-1582-1	16-25
66U1-5361-36	7-10	69NT-35-2692-1	21-44
66U-1-5361-47	17-34	69NT-41-982-2	16-32
66U-1-5371-6	16-27, 16-29, 16-31	69NT41-982-2	16-28, 16-30
66U1-5371-6	16-25, 20-42	69NT41982-2	16-26
66-U-1-5371-8	4-6	69NT41-982-3	17-34
66U1-5371-9	13-21, 13-22	73-00175-01	7-10
66U-1-6651-15	16-27, 16-29, 16-31	73-00198-01	7-10
66U1-6651-15	16-25	73-00205-00	15-24
66U-1-6811-12	13-21	76-00663-17	13-20
66U1-6811-12	13-21	76-00663-18	13-21
66U1-6811-8	13-21	79-01795-01	13-21
66U-1-8772	16-28	79-04009-00	7-11
66U1-8772	16-26	81-01379-02	21-44
66U-1-9132	5-7, 6-8	81-04042-01	21-44
66U-1-9592-13	16-30, 16-32	81-04093-00	23-47, 23-48, 23-49, 23-50, 23-51, 23-52, 23-53
66U1-9592-13	16-26, 16-28	84-04928-01	12-19
66UI-2552	13-21	86-04524-01	7-10
68-11862-01	9-16	86-04687-00	15-24
68-11862-03	9-16	86-04831-01	3-5
68-11903-07	23-48, 23-51, 23-52		

86-04831-03	3-5
86-04831-05	3-5
86-04831-06	3-5
86-04906-00	13-21
86-04918-00	16-25
86-04941-00	17-34
86-04991-01	17-33
86-05013-01	16-29
86-05013-02	16-27
86-05013-03	16-31
86-05031-00	8-14
91	16-27
91-00431-00	16-25
91-00431-02	16-29
91-00431-03	16-31
91-00446-00	17-33

A

AT39QA132	16-26, 16-28, 16-30, 16-32
AU11JR171	13-21, 17-34, 21-44, 22-46
--AU--51YA-012	23-47
AU51YA012	23-50, 23-52
AU53VA061	13-21, 13-22

K

KA69JM824	21-43
KA-69JM-840	4-6
KA69JM840	5-7, 6-8
KK71EW223	16-26, 16-28, 16-30, 16-32

S

SV215	16-26
SV217	16-26
SV44	16-26



Carrier Transicold Division,
Carrier Corporation
P.O. Box 4805
Syracuse, NY 13221 USA

<https://www.carrier.com/container-refrigeration>